

Extraterrestrial Cosmology and Technology

W. Treurniet and P. Hamden

SIXTH EDITION 2022

© 2019 P. Hamden & W. Treurniet
All rights reserved

Paul Hamden and William Treurniet assert the moral right to be identified as the owners of this work

All rights reserved. this publication may be freely shared only in its entirety. Reproduction in part requires the prior written permission of the owners.

Disclaimer - Information contained herein is provided "as is" without warranty of any kind, either expressed or implied. In no event shall anyone be held liable for any damage incurred to them by reading, experimenting, trying out, performing, and practising any of the information in this book.

Acknowledgements

We thank the many participants in the sittings who asked the Zetas innumerable intelligent questions related to the issues discussed in this book. Your efforts are very much appreciated.

Table of Contents

ACKNOWLEDGEMENTS.....	4
FOREWORD.....	7
1. INTRODUCTION.....	9
2. ETHERIC ENERGY FROM HEMOGLOBIN.....	11
2.1 A mechanism for energy exchange	14
3. GRAVITY.....	17
3.1 Interpretations of information	19
3.2 Craft dematerialization	22
4. LEVITATION IN PHYSICAL MEDIUMSHIP	25
5. REINCARNATION AND SPIRIT REALM.....	27
5.1 The structure of spirit realm	29
6. A PREDICTED GLOBAL SHIFT IN VIBRATION.....	31
6.1 A brief review of the Zeta cosmology	33
6.3 A process of shifting vibration	34
7. ZETA TECHNOLOGY.....	37
7.1 A toroidal feature in photos of ET craft.....	37
7.2 The electromagnetic radiation shield.....	43
8. CONNECTIONS TO HUMAN THEORIES	49
8.1 Transcendental physics	51
8.2 A theory of materialization	56
8.3 The “Orch OR” model of consciousness.....	60
8.4 Morphogenetic fields	61
9. THE CONCEPT OF PRIME FOCUS.....	63
9.1 The role of the prime focus	63
9.2 The local consciousness and prime focus.....	64
10. THE HOLOGRAPHIC PRINCIPLE.....	67
10.1 The nature of quanta	69
10.2 The grid	70
11. PROPAGATION OF LIGHT	79
11.1 A Zeta’s lesson on light	80

Extraterrestrial Cosmology and Technology

11.2 A theory of light in consciousness82

12. A SCHUMANN SPECTROGRAM ANOMALY89

13. EPILOGUE93

13.1 The power of illusion94

BIBLIOGRAPHY97

Foreword

Two earlier books, *The Zeta Interviews* (Hamden and Treurniet, 2020) and *Alien Interaction Trilogy* (Hamden, 2012) contain the transcripts of interviews with extraterrestrial Zeta beings who spoke to people through the Australian medium, Paul Hamden. The books and related documentation may be found on the website, www.treurniet.ca/zetacom/zetaprimer.htm.

Another book, *A Primer of the Zeta Race*, contains analyses of various topics discussed in the interviews (Treurniet and Hamden, 2022). The present book is a companion to that book. It is for people interested in thinking further about what the Zeta science and technology have in common with human science. For example, the holographic-like quanta of the Zeta science invite comparison with the holographic principle formulated by human scientists. Also, the Zeta understanding of how matter is experienced has some similarity to the panpsychism of the human ‘Orch OR’ theory of perception. Further, the Zeta’s comments on light inspired the hypothesis that the medium of propagation for electromagnetic radiation is the energy of consciousness.

The article, *A Cosmology Founded on Intrinsic Attributes of Consciousness*, may help to understand the concepts described by the Zetas. The article was published in the Journal of Consciousness Exploration & Research, 10(6):454-474, 2019, (<https://jcer.com/index.php/jcj/article/view/822/834>). The Zetas’ view of reality was described as a cosmology based on ontological idealism, that all reality consists of mental processes.

1. Introduction

The Zeta race is part of an extraterrestrial species whose home planet is somewhere in the Zeta Reticuli star system. They have a physical existence, and can also exist in full awareness separated from the physical body. This is a way of life that most humans can experience only at a rudimentary level in altered states of consciousness.

Over the past several years, we recorded interviews with Zeta beings speaking through the medium, Paul Hamden. They have the ability to project their consciousness at the speed of thought to distant places while their body remains on their home planet. This enables them to interact with the medium's body and speak using his physical vocal apparatus. They have taught us that physical existence is part of a much larger reality where both physical and non-physical beings exist.

The Zeta being prepares a vibrational state, and when the medium enters into that altered state of consciousness, the being speaks using the medium's body. Occasionally, other races come through as well, and each brings a distinct energy that some other people in the room have learned to distinguish.

While the medium is in the altered state, he gives control of his body to the Zeta communicator. He becomes a passive observer, able to monitor any conversation in the '*now*', but unable to participate. He typically can

Extraterrestrial Cosmology and Technology

remember little of the conversation later in his normal state of awareness. Therefore, audio recordings are always made. The complexity and consistency of the Zetas' responses to questions are evidence that the contact is an entity external to the medium. There has also been physical supporting evidence that the beings are who they say they are, such as the nearby appearance of craft.

The Zetas described a version of reality in which all mental events, including physical experiences, occur in what they call "one source energy." This is a non-physical energy that is aware; that is, it is the consciousness that we all share. The Zeta cosmology that follows from this concept offers an all-inclusive, consistent understanding of existence, and it can explain otherwise incomprehensible human experiences.

The concept that all of existence is consciousness or awareness is known in human philosophical literature as an ontology of idealism. The following chapters explain how things work in the energy of consciousness, including how consciousness produces the world of matter. Human scientific knowledge can be reinterpreted and integrated with a science based on idealism. The chapter, *Connections to human theories*, shows how this might be done.

2. Etheric energy from hemoglobin

Summary: *The chapter concludes that hemoglobin molecules in the blood accumulate and distribute near-infrared electromagnetic energy in the body. The accumulated energy is radiated away by red blood cells at a much lower frequency of 13.6 THz. The energy would be received by antennae in the etheric body tuned to receive it. The existence of such a distribution system for energizing the etheric body was inferred from (a) the hemoglobin absorption spectra measured by humans, (b) calculations that assume the red blood cells are transmitting antennae, (c) the explicit mention of hemoglobin involvement by the Zetas, and (d) the Zetas' description in the past of a similar mechanism for energy exchange in sittings.*

An obvious effect of breathing is oxygenation of the hemoglobin in the blood. It so happens that oxygenated hemoglobin has a different electromagnetic (EM) absorption spectrum than deoxygenated hemoglobin. The graph in Figure 2.1 from data published by Prahl (1999) shows the different spectra. The *molar extinction coefficient* shown in the graph is a measure of how much energy the hemoglobin molecules absorb at a given wavelength.

Of particular note is the relatively large difference between the absorption spectra of oxygenated and deoxygenated hemoglobin between the 600 and 800 nm wavelengths. This range, in the shaded part of the graph, corresponds to the red and near infrared parts of the electromagnetic spectrum.

Extraterrestrial Cosmology and Technology

If the absorption spectrum of the hemoglobin could be measured in the body, the values in this spectral range would depend on where the measurement was taken. The oxygen saturation level in arterial blood is significantly higher than in venous blood. This means that the amount of electromagnetic energy carried by the hemoglobin would vary as it moves around the circulatory system. When a hemoglobin molecule picks up oxygen atoms, the EM energy contained by the molecule would be forced to move somewhere else. We propose that this EM energy is available to the etheric body when the hemoglobin is oxygenated.

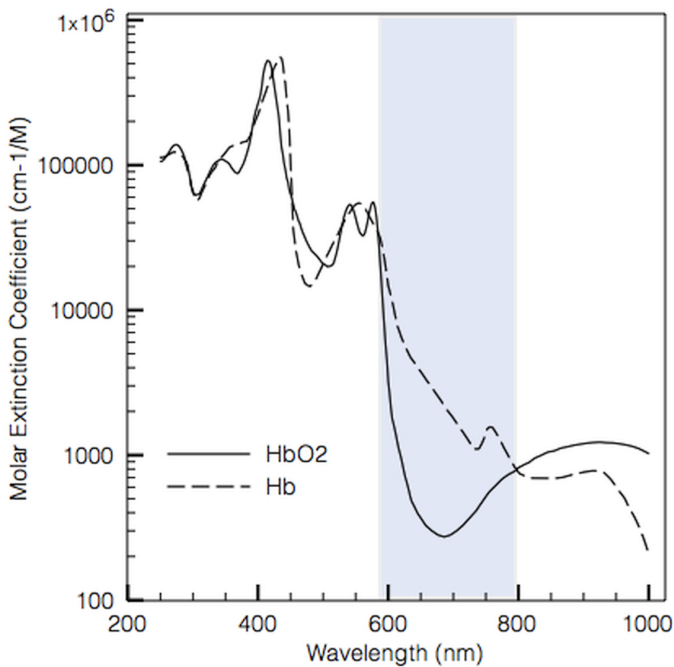


Figure 2.1. Hemoglobin (Hb) and oxy-hemoglobin (HbO₂) absorption spectra (data from S. Prahl, Oregon Medical Laser Center)

Extraterrestrial Cosmology and Technology

A similar phenomenon was described by a Zeta during a sitting. The sitters noted that yawning often occurred at the beginning of sessions. This prompted a discussion on the importance of breathing for facilitating contact. The Zeta made the following comment more than two years earlier,

“We need a certain energy to produce the contact. This is why the breathing became a ‘larger issue’ (yawning of sitters). This expels the energy needed for contact - this process works by stimulating the oxygen in the blood, thus increasing the electrical discharge you provide us. This charge generates, in conjunction with the thought of contact, a small vortex which we speak to you through.”

The Zeta said that the contact process needs energy which is associated with the breathing of the sitters. The process works by '*stimulating the oxygen in the blood*', which in turn '*expels*' the electrical energy needed for contact. This description parallels the independently conceived notion expressed above that “EM energy is available to the etheric body when the hemoglobin is oxygenated”.

The existence of this energy transfer mechanism was upheld when the Zeta was asked for verification with the question, “What physical mechanism transfers energy between the physical and etheric bodies? Is hemoglobin involved and, if so, how?” The Zeta replied, “*Yes, hemoglobin is involved as an increase of oxygenated blood is cycled through an entity. In doing so, the energy of the human form is assimilated to the etheric body. But, there is a continual exchange between the physical and etheric, not a state of separation.*” The exchange is continuous since the physical body is a transformation of the etheric body by consciousness, and so both contain the same information.

The oxygen saturation level in arterial blood is typically 95-98%, and drops to around 60-80% in venous blood. The difference reflects the body's use of oxygen. So the biggest change over time in oxygen saturation level of the blood occurs when it moves from arteries to the veins. This is measured as the *arterio-venous oxygen difference*. According to the above model of energy uptake and release, EM energy

is accumulated during the venous phase of the circulatory system for distribution to the body. The energy system of the body seems more efficient than only the \distribution of oxygen by hemoglobin would suggest.

According to the model, arterial blood with its high oxygen content absorbs the least EM energy. Conversely, venous blood with its lower oxygen content absorbs the most EM energy. As the blood returns to the lungs via the venous system, the hemoglobin molecules that had given up their oxygen atoms can absorb EM energy. The Zeta agreed, *“There are chemical exchanges within the physical body that produce electrical impulses. Those impulses provide properly formed mechanisms which interchange with the etheric body.”*

The energized hemoglobin molecules enter the lungs, and react with available oxygen. This chemical reaction is clearly not prevented by the absorbed EM energy. But the oxygen and the absorbed energy cannot coexist in the same molecule, so the *energy to produce the contact* is radiated away to *interchange with the etheric body*.

The accumulation and radiation of energy is continuous as long as the blood keeps circulating. However, the amount of available energy should vary as conditions change in the body.

2.1 A mechanism for energy exchange

The proposed model requires a mechanism to transfer the energy accumulated in the hemoglobin to the etheric body. The Zeta was asked, “Do you agree that this electrical energy accumulates in the hemoglobin and then is discharged in the form of a radio wave?” They answered, *“Yes, the lungs are used as mechanism for creating the charge, but the whole body and the breathing apparatus of the medium is used to deliver the energy to the etheric body.”*

The Zeta confirmed that the electrical energy accumulates in the hemoglobin and is discharged in the form of a radio wave. The energy is delivered to the etheric body by the physical body, including the “breathing apparatus” or respiratory system. Although the Zeta referred

to the body of the medium, we can assume that the response applies to humans in general.

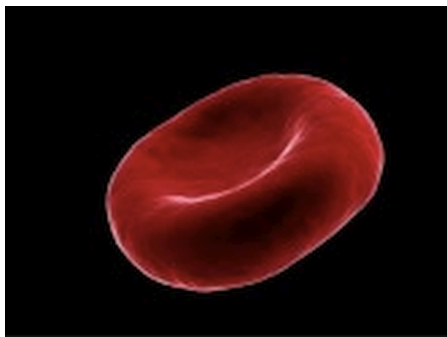


Figure 2.2. An image of a red blood cell

A red blood cell, shown in Figure 2.2, has a toroidal shape with the hemoglobin arranged around the periphery and with very little in the centre. The hemoglobin constitutes 95 percent of the mass of the cell (Prahl, 1999). This shape might function as a loop antenna for releasing the energy. Assuming this is so, we can estimate some physical parameters related to the process.

For best efficiency, a [resonant loop antenna](#) has a circumference equal to the wavelength of the signal to be transmitted. The red blood cell is approximately $7\text{ }\mu\text{m}$ in diameter with a circumference of $22\text{ }\mu\text{m}$. A wavelength of $22\text{ }\mu\text{m}$ corresponds to a frequency of about 13.6 terahertz (THz). This is the frequency of radiation that the etheric body should be able to receive. Note that the energy accumulated by the red blood cell has wavelengths ranging from $.6$ to $.8\text{ }\mu\text{m}$ (Figure 2.1). These correspond to a frequency range of 370-500 THz. So the red blood cell may function as a frequency converter, collecting energy in the 370-500 THz range and converting it to the 13.6 THz antenna resonant frequency.

If the 13.6 THz energy is indeed absorbed by holographic-like etheric patterns known as quanta, the frequency may be significant. It would

Extraterrestrial Cosmology and Technology

resonate with quanta having the same frequency. Furthermore, the frequency may be an important part of the etheric definition of matter. A Zeta said, *“Matter needs to exist in certain frequencies. For it to bind, it needs this frequency.”* And, *“The frequency of the molecular structure of matter is not just one frequency. Matter does not contain one frequency. Many frequencies combine to create this universal structure.”* So the vibrations encoding the quanta of matter appear to extend over a particular range and are decoded by the omnipresent perceptual process.

The Zeta spoke of the *“frequency of the molecular structure of matter.”* Human understanding of *molecular*, which may not be the same as the Zeta understanding, is that the phrase refers to the bonds between atoms in molecules. These are thought to vibrate with frequencies in the range of about 1 to 100 THz ([MolecularVibration URL](#)). The Zeta appeared to suggest that etheric objects must vibrate at frequencies in this range in order to be experienced as matter.

The 13.6 THz energy would be absorbed by the etheric representations of living matter, thus contributing to the energy of the atomic bonds in molecules. So the model suggests that the radiated electromagnetic energy accumulated in red blood cells resonates with and energizes molecular structures of the body.

The Zeta commented that the frequencies of the swirls depend on both conscious thought processes and external events affecting the physical body. Changes in the swirls' distribution and energy are directly reflected in the health of the physical body. The swirls would have the property of angular frequency or spin, and are said to vary in number depending on the emotional and physical state of the body. Perhaps the etheric swirls can function as loop antennae when tuned to receive the 13.6 THz energy radiated by the red blood cells.

3. Gravity

Summary. *A Zeta said that gravity is “determined by all combined matter to form body of matter.” Also, “many frequencies [of matter] combine to create this universal structure.” The ‘all combined matter’ and ‘universal structure’ comments are consistent with an all-encompassing context for creative activity known as a formal field. A Zeta craft eliminates gravitational attraction by changing the frequency of matter. Further, it can dematerialize relative to human perception when a signal is sent to the craft from an external source.*

Prior to receiving the information discussed in this chapter, the author, WT, informed the medium that he wished to query the Zetas about their scientific understanding of gravity. Because of other commitments, the medium was unable to find the time to sit for connection. Instead, the Zeta came to the medium in an early morning meditation and unexpectedly provided some information about gravity. Immediately after the meditation, the medium text-messaged WT and was able to reproduce the download he had received. WT responded also by texting.

Zeta download: *Gravity pertains to matter - depending on the mass will determine the gravity body. The frequency of matter also determines the possibility of attraction, change of frequency negates matter, frequency determines pull, cyclical action of frequency of matter*

Extraterrestrial Cosmology and Technology

causes other matter to be attracted to it as all matter is in pulse, all matter attracts.

Medium: I see many masses all in resignation. The universe is like water drops in glass all sliding towards each other. Speed determines distance that frequency can be used held from other matter. The influence of gravity is diminished by distance. Gravity is frequency. That's my very early morning download.

The imagery was much more powerful than the words. You know when music is in harmony it blends. When it is not in harmony it is levitation, or not in attraction. Music is like frequency of matter, discordance is the key. To change the harmony provides repulsion.

WT: Matter in harmony attracts?

Medium: Yes.

WT: I wonder how to determine frequency of matter? All matter must have the same fundamental frequency.

At this point, the Zeta connected again through the medium and answered the question by texting.

Zeta: *Frequency is determined by the basic fundamentals of matter's structure. So mass of matter structure determines gravity density and frequency. Basic frequency is coalescence of harmony of combined matter frequencies. Mass x frequency x structure determines attraction, mass being basic combination of atomic structure of matter.*

WT: So frequency of mass must be constant?

Zeta: *Because distance between molecular structure determines attractions, frequency of mass is constant, determined by all combined matter to form body of matter.*

Dematerialized craft move through substrate of universe by ignoring body of matter rules - not ignoring, being different - not in harmonious environment but by being harmonious in different harmony to basic universe of matter. Original matter's ethereal body determines structure, so materialized state compared to dematerialized state its consciousness

Extraterrestrial Cosmology and Technology

structure.

Re-materialization is performed and supported by energy body capacity to hold basic quanta pattern. Matter then re-establishes form. Propulsion system of state-of-matter drive of craft not affected due to etheric body in same state as craft.

WT: Ah, matter forms only when etheric template is compatible with matter frequency.

Zeta: *Occupants also in temporary stasis of motion. Stimulate etheric body to reacquaint matter to form. Pulse determines organization of matter to be reinstated by etheric body, so etheric body holds matter in disassociated state.*

To re-assimilate matter, pulse is used to tell frequency to realign. Pulse is from external source, as cannot be inside etheric all body of matter whilst jump process taking place. Technology in place to reanimate craft.

WT: Is there a code in the etheric template that instructs to assimilate matter?

Zeta: *The etheric template holds code, yes.*

WT: And pulse activates this code?

Zeta: *Yes, to assimilate matter, code is information field. Etheric body holds all information. Larger field holds all information. Information within field is informal field to formal field. Formal field collection of all structures of matter within this universe. Field permeates everything.*

3.1 Interpretations of information

How to interpret this information is complicated by the Zetas' understanding of *frequency*. They said elsewhere that whenever they use the word 'frequency', it is intended as an analogy for state of consciousness (*Creation and consciousness*, Treurniet and Hamden, 2022). Since matter is represented as a configuration of consciousness, a particular frequency of matter would have a particular state of consciousness or a sensed vibrational state. We suggested that a more

appropriate word for state of consciousness or frequency is *vibration* which can be sensed and compared in the ‘now’ (Treurniet and Hamden, 2022, *Time*).

To interpret the information on gravity, different meanings of frequency were employed. The understanding of frequency as the familiar cycles/sec is utilized in *Sections 3.1.1 and 3.1.2*, and as a state of consciousness or vibration in *Section 3.1.3*.

3.1.1 Interpretation #1

The Zeta said that the frequency of matter is determined by the *basic combination of atomic structure of matter*. This frequency is a constant, *determined by all combined matter to form body of matter*. Exactly how the Zeta would calculate matter frequency is not specified.

Although their use of frequency instead of vibration was always intended as an analogy, a Zeta nevertheless once assigned numerical values of frequency to particular states of consciousness in order to give an indication of relative differences. That they did this suggests there may be an approximate, yet consistent, relationship between frequencies on a rational scale and physical states of consciousness. Therefore, we may be justified in using numerical frequencies to understand the Zeta’s information on gravity.

The frequency of matter in Hz can be calculated by using the formulae, $E=Mc^2$ and $E= hf$, where E =energy, M =mass, c =speed of light, h =Planck’s constant, and f =frequency. Equating the right sides of the two equations, and substituting the values for the constants gives $f=M \times 1.356 \times 10^{50}$, where M is in kilograms. For example, Carbon has an atomic weight of 12.011, so one mole (6×10^{23} atoms) has a mass of 12.011 gm, and one atom has a mass of 2×10^{-26} kg. According to the formula, the frequency of a Carbon atom is 2.72×10^{24} Hz. This frequency corresponds to the Compton wavelength, the wavelength of a photon with the same energy as the rest-mass energy of the atom.

The Zeta’s comment, “*mass being basic combination of atomic structure of matter*”, indicates that the mass needed to calculate frequency should be based on a combination of the atomic weights of

all the elements involved. On another occasion, the Zeta said, “*Matter takes on many forms. The frequency of the molecular structure of matter is not just one frequency. Matter does not contain one frequency. Many frequencies combine to create this universal structure.*”

In the simplest case, a Zeta craft would be constructed from a material made from a single element, and the mass variable would be the weight of a single atom of that element. But when there are multiple elements in the craft material, the mass might be determined simply by averaging the individual weights of the different kinds of atoms. Of course, how the Zetas would do this is unknown, since they do not compute numerically like humans do.

3.1.2 Interpretation #2

Another possible interpretation of matter frequency was developed by Hamein (2013a) based on a model of the holographic principle (Chapter 10). The angular frequency of matter that was computed had a period on the order of the interaction time of particle decay via the strong electromagnetic force. The frequency is a characteristic of protons found in all atomic matter.

3.1.3 Interpretation #3

The reinterpretation of frequency as *vibration of consciousness* suggests a different understanding of the discussion pertaining to gravity. The creation of matter is analogous to modulation of a radio frequency carrier wave. The grid vibration is like the carrier frequency and the created thought is analogous to the speech or music to be transmitted. The Zeta said, “*Matter needs to exist in certain frequencies. For it to bind, it needs this frequency.*” The latter frequency is the vibrational state of the grid which depends on the realm’s *Physical type of vibration* (Treurniet and Hamden, 2022, Figure 14.1). In our universe, the grid vibration could be the etheric realm base vibration identified in the figure.

3.2 Craft dematerialization

A craft was said to dematerialize when its grid vibration differed sufficiently from the vibration of the earth's grid. The Zeta said, *"Frequency [vibration] is determined by the basic fundamentals of matter's structure. So mass of matter structure determines gravity density and frequency. Basic frequency is coalescence of harmony of combined matter frequencies."*

When the craft's grid vibration is no longer aligned with the Earth grid vibration, the etheric body of the craft does not have the *"capacity to hold basic quanta pattern"* that can be transformed by the human perceptual process. A human could not transform the quanta at that level of vibration in order to be aware of the craft. The human would say the craft has ceased to exist. It could be said to have dematerialized. The human typically cannot move to the higher vibration which would enable awareness of the physical craft.

The craft's etheric body recognizes a code that changes the vibrational level of its quanta. The Zeta said, *"...pulse is used to tell frequency to realign. Pulse is from external source, as cannot be inside etheric all body of matter whilst jump process taking place."* The status of the code controls the alignment of the craft vibration with the normal Earth grid vibration. The technology re-materializes the craft when desired. Then the etheric body can again *"hold basic quanta pattern"* so that the matter appears again to a human observer.

3.3 Discussion

The gravitational attraction between any two bodies of matter appears to depend on the vibrational similarity of the grids supporting their quanta. The Zeta said, *"The frequency of matter also determines the possibility of attraction, change of frequency negates matter, frequency determines pull, cyclical action of frequency of matter causes other matter to be attracted to it as all matter is in pulse, all matter attracts."*

The *"frequency of matter"* is interpreted as the vibrational state of the grid holding the matter quanta. When the vibration of the grid is changed for one body, it *"negates"* or repels another body of matter that

has the original vibration. Further, they said, *“Our craft are in disharmony with the physical frequency of matter so that the gravity does no longer affect us, but of course we must be able to move on the etheric rail and so the entity which is the craft is able to negotiate the rails by consciousness.”* When the matter of the Zeta craft is not in harmony with the matter of the planet, there is no mutual gravitational attraction and the craft can propel itself using the *“matter of state”* method, or consciousness.

The Zeta also said, *“Matter does not contain one frequency. Many frequencies combine to create this universal structure.”* According to the radio carrier analogy in Treurniet and Hamden (2022, *Creation and perception*), the created thought is encoded in quanta by a band of vibrations centred on the grid vibration.

According to the Zeta, the frequency of matter has a cyclical action that attracts matter to matter. All matter is *“in pulse”*, suggesting that the attractive force arises from interactions among matter waveforms. The amount of *pull* is affected by the frequency. If the frequency of matter is changed abruptly, it *negates matter*, suggesting that there is no attraction when the phase of the waveform of one body of matter cannot follow the phase of another body of matter. The Zeta said that relative speed affects attraction, perhaps due to doppler shift affecting relative phase. Distance between objects also affects attraction, so synchronization of the phase of matter waveforms may decrease with increasing distance.

The formal information field mentioned by the Zeta appears to be a reference to a consciousness field that contains all that could ever be imagined, including all possible structures of matter. The Zeta said, *“Etheric body holds all information. Larger field holds all information. Information within field is informal field to formal field. Formal field collection of all structures of matter within this universe. Field permeates everything”* (Treurniet and Hamden, 2022, *Informal and formal fields*). This statement suggests that the formal field is similar to Mach’s principle which originated with a human scientist. It holds that inertial laws are determined by the large-scale structure of the universe.

Extraterrestrial Cosmology and Technology

The statement also implies that the etheric body in an informal field is influenced by the formal field. The etheric body, which defines the shape and the chemical composition of a corresponding physical form, is not independent of the contents of the larger formal field since *“Formal field collection of all structures of matter within this universe. Field permeates everything”*.

4. Levitation in physical mediumship

There are times in the presence of a medium during a séance that a table will rise completely from the floor to a height of tens or even hundreds of centimetres. The levitation is unaided by any normal means. Typically, a number of people are seated in dim light or darkness around the table with both hands resting lightly on it. Before it levitates, the table may sometimes skitter across the floor so that the seated people need to pull their chairs along with one hand to keep up with the table while it moves. A Zeta was asked, “What is the mechanism that causes levitation in physical mediumship séances?” They gave the following reply.

Zeta: *A field is created around a device, let's say it's a table, and the consciousness of the entity that is in control imposes its thoughts on the field, and then shifts the etheric body of the table. The physical matter follows the etheric body, but you will notice that your hands that are attached to the table are not in any way affected by the levitation process. There is space between all things, and although you are touching the surface, you are not touching a surface.*

Then of course there is the other way of doing it. And there is no other way but to explain it, and the consciousness of the medium is extracted and what is seen that a very fine matter propagates through

Extraterrestrial Cosmology and Technology

consciousness. It then attaches itself to the table and the table is moved. The cord, as you call it, may or may not exist.

It may be said to you that there is also another way to look at the table levitating. A group consciousness, a group of entities may impose their will and their thought process upon the table, and the combined thought that the table will lift manifests a change in consciousness around the table, and then the table will shift.

According to the Zeta, spirit beings work with the medium to accomplish the levitation. There are several ways to do this. The spirits could move the etheric body of the table, and the physical table would follow. Or a spirit's consciousness could replace the consciousness of the medium in order to create rigid ectoplasmic forms from fine matter. These forms extend from the medium's body to the table, and may or may not be visible. The forms apply pressure to the table to cause it to rise. Finally, the table can be made to rise by only the combined will of several non-physical entities or spirits who "*manifest a change in consciousness around the table.*"

5. Reincarnation and spirit realm

All entities of consciousness space are distinguished by their vibrational states. These include realms and timelines, and entities such as souls, higher-self entities, or spirits that are facets of a higher self. In the Zeta's words, *“The soul belongs to a class of energies which distinguishes it from all other conscious entities in the universe. It is self-aware and understands its distinctiveness. The soul is multifaceted and incarnates in many states of being in many realms while still remaining one entity.”* The multifaceted energies allow consciousness to be in separation from itself so that it can have new and independent experiences.

The purpose of existence is to evolve and learn, and there is a pressure to evolve toward unity. All facets of the soul desire to become part of a collective or group consciousness in a state of love. A Zeta said, *“Many soul facets can combine to form one entity. This means many entities, individual group souls, can combine to form a faceted being, living one existence.”*

Spirits choose to be born into human bodies on earth as part of a process of improvement; that is, to work out how to achieve a higher state of consciousness. It can be difficult since humans have almost no memory of the spirit's experiences in previous lives. The Zeta informed us, *“The physical frequency defines what you can remember.”* Our low vibration existence as living beings on earth prevents us from recalling other higher-vibration states of being.

Extraterrestrial Cosmology and Technology

A spirit being's repeated experience of a lifetime in the physical etheric realm is known as reincarnation. Some human belief systems have the concept of karma, the idea that a spirit must redeem itself in one lifetime for the wrongs committed against others in previous lifetimes. The Zeta offered a slightly different slant when they said, *"Now we see the real reason as to why beings incarnate. There are the obvious lessons that increase the vibrational frequency of the group and individuals"* (Hamden, 2012, p. 228). So the purpose of a new lifetime is not necessarily to make up to others for wrongs committed against them. Rather it is to increase one's own and others' vibrational states. The difference is subtle. The focus of a life has less to do with correcting wrongs than with raising one's state of consciousness. The Zeta said, *"Each time you act in a loving way towards each other, you are raising your vibration and succeeding"* (Hamden, 2012, p. 243).

Back in the spirit realm at the end of each lifetime, a spirit knows its true vibrational state. It may then prepare for a new lifetime with the intention to have a higher vibrational state when it is over. Overt "good" or "bad" actions are less relevant in a lifetime than the intention behind those actions. A loving intent preceding an action rather than the deed itself raises a person's state of consciousness.

The beings of the Zeta race say they cannot enter the spirit realm since the Zeta physical energy and knowledge of the Zeta existence would severely infringe on the freewill of the spirit realm inhabitants. However, other beings that are non-physical may interact with elements of the spirit realm. A Zeta said, *"Only a non-physical consciousness, non-physical incarnated races may become threads to oversouls within spirit realm. ... This is where we believe that much of the higher frequencies exist within the spirit realms. If you look behind what the spirit realm actually is, it is infinite threads of consciousness weaving its way back through to source."*

The spirit realm appears to be somewhat isolated from other forms of consciousness such as extraterrestrial races that have a non-resonating energy. However, it is possible for a non-physical or *interdimensional* entity to interact with the spirit realm at the oversoul level - a

concatenation of a number of higher-self entities. The Zeta said, “*The oversoul consciousness perceives the interdimensional entity, which is a non-physical entity, as being akin to a telepathic communication. ... They exist behind the spirit realm, feeding into, and from.*”

5.1 The structure of spirit realm

A Zeta model of the spirit realm was described in Treurniet and Hamden (2022, *The spirit realm as information fields*). According to the model, the spirit realm has vibrational states that are higher than the astral realm vibrational state. A Zeta acknowledged that many different states of consciousness exist within spirit realm. They said, “*One facet of the spirit realm is your oversoul. They are like rooms with many entities in each room, each of the rooms creates a dwelling. Your house has many rooms, your house is the spirit realm, each of the rooms has potential to be many entities.*” The rooms have different vibrational states, each supporting a different consensus reality.

A Zeta also introduced a novel perspective on the spirit realm contents. Beings such as spirits, higher-self entities, and oversouls are represented at a lower level of analysis as hierarchically organized threads of information. In Treurniet and Hamden (2022), the Zeta described the spirit realm and what it contains.

The words “*informal*” and “*formal*” distinguish levels of the hierarchy of consciousness in a realm. Additional elaboration is given in Treurniet and Hamden (2022, *Informal and formal fields*). From the context, an informal thread is the input layer of any sub-hierarchy in the information structure, and the formal thread refers to higher layers. For example, a higher-self entity is an informal thread, and the formal thread of the next layer combines informal threads from the layer below. The formal thread provides a context for creating in the informal thread.

It is important to note that the spirit realm entity’s experiences are influenced by its intentions and expectations. Spirits returning to the spirit realm usually see themselves as human in appearance, sometimes existing in a three-dimensional, Earth-like environment. This is what they would expect given their recent physical experiences.

6. A predicted global shift in vibration

Summary. *The Zetas predicted that humanity will soon have the opportunity to shift to a higher state of consciousness. But to preserve individual human freewill, this chapter assumes that a higher-vibration planet would need to be available before the shift. Then, an individual human consciousness would be able to remain at the lower vibration or raise its vibration to the level of the higher-vibration planet. The Zetas expect all of humanity eventually will shift to the higher level consciousness.*

Conversations with the Zeta race mentioned the anticipated ascension of the human race. What this could mean for humanity is discussed in the chapter, *Incarnation and ascension*, in Treurniet and Hamden (2022). A Zeta said, “*Your ascension will unlock a lot of this potential that lays dormant within you.*” For example, humans should have new abilities like awareness of past lives and telepathic communication, and they would be able to communicate more easily with the higher-vibration extraterrestrial races.

The Zetas also believed that a less drastic shift in vibration “*will be occurring soon,*” well before the major shift of the ascension process. The shift expected earlier was described in the following quote from Hamden (2012, p. 259).

Extraterrestrial Cosmology and Technology

The healing matrices which are to be created around your planet will bring about the necessary shifts required to raise the level of frequency that are needed to change the magnetic resonance of the Earth's fields. This shift will be occurring soon, and as you have all felt, there has been many unsettling changes that have been brought to bear upon you all. Some have felt this more strongly than others, but the intention is that the shifts required are necessary for this planet.

Your current energies are in flux, and this explains to you why there is an unsettling process you have felt. This is to come to an end quite quickly. The difference between the beings who are to move through this easily and the ones who are not will be what they allow as flow in an energetic form.

Blockages from energy changes build up. This causes the emotional body to react in a way that would cause an unbalanced process to take place, emotionally. You seek to be grounded but this of course is a temporary measure on your behalf, as your grounding consists of the shifts you must endure for the resonation to move to a higher state. Like a song it will change tune, this new tune will allow a different song to be heard and sung (we can say this in no simpler words as an analogy)

Friends, be aware that as you are growing, so is all around you. Everything is constant expansion, and for now remember, that to "be" means to "be in flow". Do not resist the changes you are currently feeling as they are another step towards your energetic body forming the next being you are to become.

Treurniet (2019) described a multidimensional model of vibration that came from the conversations with the Zetas (see also Treurniet and Hamden, 2022, *Multidimensional vibrations*). The anticipated shift in vibration would be a marked increase along the *Physical type of vibration* dimension.

In September, 2012, a Zeta predicted, *"It has been seen that in ten of your years, certain changes will be in influence for you as a race but, as*

stated, not all is seen, or known. ... The future, as you may call it on any timeline, exists now and cannot be guaranteed of an outcome” (Hamden and Treurniet, 2022, p. 48). With the latter caveat in mind, humans should have the opportunity to shift their vibrational level around 2022, ten years after 2012. Afterwards, they would continue to have a physical experience but at a higher level of vibration.

6.1 A brief review of the Zeta cosmology

The Zeta cosmology holds that consciousness is the foundation of all that exists and it has a property of vibration. Each entity in consciousness is situated somewhere on dimensions of vibration (Treurniet and Hamden, 2022, *Multidimensional vibrations*). A physical entity behaves like a low-pass filter and has a *highest possible vibration* on a physical plane of the model. The plane is defined by the *Physical type of vibration* and the *Harmony* dimensions.

The entity can be aware of phenomena having vibrational states the same as or lower than its own highest state, but is not normally aware of phenomena having higher vibrational states. The entity’s vibration could shift higher on the *Physical type of vibration* dimension or on the *Harmony* dimension. A shift on the latter dimension would account for an increase in ability to love.

Intrinsic to consciousness is the ability to create with thoughts. The energy of a being’s *highest possible vibration* is modulated by its thoughts when it has the proper intention to do so. The resulting creation representing the thought is analogous to an interference pattern that is placed in a substrate in consciousness known as the grid. The created representation is decoded by a perceptual process which is also intrinsic to consciousness. Any being with the same or higher vibration can experience the same thought when the representation is “illuminated” by the unmodulated vibration that created it.

The holographic-like patterns resulting from the creation process are known as *quanta* by the Zetas (see the chapter, *The holographic principle*). Quanta defining our physical universe exist in the etheric realm, a particular range of vibrations in consciousness. The human

perceptual process transforms the quanta to consciousness potentials. These potentials are experienced as sensations such as vision, hearing and touch. The sensations are usually interpreted in our culture as attributes of matter objects that exist separately from the perceiver. Such independence is an illusion since all processes involved in the perception of matter take place in consciousness.

The quanta are supported by a non-spatial, grid-like construct in consciousness. A Zeta explained, *“It is a manifestation of universal energies, everything has a resonating grid – every specific energy has its own grid. ... The grid emanates from each planet but is also joined as one. Every physical individual item has its own grid and links into the main grid, everything is all!”* The earth and each individual object it contains are represented by quanta in the grid.

The grid also functions as a medium for non-local, telepathic communication. The Zeta explained, *“This [the grid] is a natural fabric, a natural creative process that is required for all beings to interact with humans. This is built into the quanta. This allows the spirit beings to interact with humans, all other races to interact with humans, to have beings from an astral level to interact with humans. So, there is a inbuilt function into the consciousness of humanity, a inbuilt function into the consciousness of this planet that allows all beings to interact on any levels within the planet that would be inhabitants of the planet. This inbuilt process then allows all entities within this planet to interact with each other. This is the beginning of the collective consciousness of the race.”*

6.3 A process of shifting vibration

Human consciousness exists in a range of vibrations that defines the etheric realm. An individual consciousness is integrated with a physical body defined by the quanta of the etheric body. A Zeta said, *“The state of mind that you hold will be much aligned with the etheric body, and the energy that you resonate at between yourself and the etheric body.”* If the consciousness were to shift to a higher vibration, the physical

Extraterrestrial Cosmology and Technology

body's vibrational level should also shift to remain optimally compatible.

The physical body is composed of matter like other material objects. For this body to exist in a higher vibrational state on the Earth in the midst of other matter, the vibrational level of all matter should shift in concert with the state of consciousness. The common vibrational level was supported by a Zeta's comment, *"There is an energetic net around the planet, but it is to do with the way the human physically is, and all other structures that exist on the planet."* The vibrational state of the energetic net (i.e., planetary grid) should be the same as the humans' physical vibration.

The requirement of a common vibrational state around the planet poses a dilemma for a shift process where the choice to do so is made by each individual. How could one human among many shift to a significantly higher level of vibration without violating the freewill choice of others? The perceptual process would need to operate in the lower Earth vibration as well as in the higher vibration in order *"to hold the physical construct that is required for humans to exist."* If a higher-vibration planet does not already exist naturally, perhaps some entity has plans to prepare a higher-vibration Earth for the humans who wish to shift to the higher level. The new version of the planet would remain imperceptible to the lower-vibration humans who choose not to shift to the higher vibration.

A Zeta mentioned a feature of the Earth grid that would facilitate making a shift to a higher vibration. The Zeta said, *"All planets have the requirement that there is a potential that provides the individual quanta that is the determining factor for what is able to exist within the physical structure of that planet."* The potential would specify the default vibrational level to be used by a perceptual process to transform quanta to sensations. The default potential, which informs the perceptual process how to decode quanta, is held in the planetary grid. When a human consciousness shifts to a higher-vibration planet, a being's perceptual process would be recalibrated using the grid potential intended for that purpose. The grid potential ensures that a being's

Extraterrestrial Cosmology and Technology

perceptual process is tuned to the correct vibrational level for perceiving matter.

Information from the Zeta interviews suggests how this higher-vibration planet could come to be. As suggested, it may exist naturally as part of the Multiverse, or an entity may be able to create it. The Multiverse is a large number of timelines associated with the spirit realm. The timelines are distinguished by their state of consciousness or vibration (Treurniet and Hamden, 2022). The Zeta said, *“The possibility of multiple existences for you is a reality.”* The timelines are normally used by the human incarnation process. A human exists *“in infinite realities in the same time, because the oversoul has separated itself into many forms, and thus existing in many physical manifestations, you understand, and these are called timelines.”*

The Zetas revealed that they can copy multiple timelines to “synthetic quantum environments” in order to simulate the human incarnation process and to predict the likelihood of certain outcomes. They said, *“The timeline of a human may be created,”* and so they or another race may be able to copy and modify a timeline suitable for accommodating the shift to a higher-vibration Earth.

A shift in state of consciousness would see a person become more loving. But, the Zeta said, *“There will also be many humans who choose not to be influenced by it as well.”* Each human consciousness will choose whether to make the shift or not, and its freewill is not affected by the choices of others. The Zeta advised, *“Do not resist the changes you are currently feeling as they are another step towards your energetic body forming the next being you are to become.”*

The shift is expected to be a dramatic change for humans as they choose to become more loving and quanta are perceived at a higher level of vibration. The Zeta said, *“All things must change – as they change, the grid changes, and this changes everything.”* The planetary grid and the representations of all matter on the planet will change to a higher level of vibration. The phrase, *“this changes everything”*, is particularly meaningful in that all will be experienced in a higher state of love.

7. Zeta technology

Summary. Two technologies of the Zetas are discussed. The first is associated with an anomaly often seen accompanying craft in photographs. It is a translucent toroidal shape thought to be formed by a field created by the craft's propulsion system. This conjecture was confirmed by a Zeta. The second technology was associated with an anomalous gentle ridge of resistance felt in the air while walking. The resistance, also confirmed by a Zeta being, was a dome-shaped shield to protect Zetas from electromagnetic radiation when they ventured outside their craft.

7.1 A toroidal feature in photos of ET craft

The Zetas have applied their knowledge to the creation of technologies, and they discussed the design of their craft and its method of propulsion. Before any discussions with the Zetas had taken place, one of the authors had identified toroidal optical distortions near craft in many enhanced photographs of UFOs (Treurniet, 2017). For example, the left panel of Figure 7.1 shows a cropped original photo, while the right panel shows the photo enhanced with equalization to increase contrast. The toroidal shape is clearly evident in the right panel just above the craft.

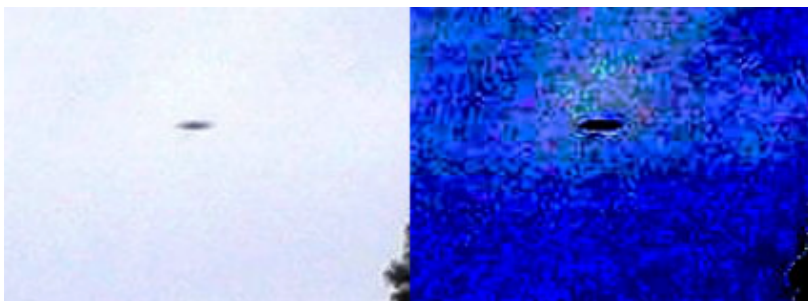


Figure 7.1 Example of an optical distortion above a craft -
Left panel: Original, Right panel: Enhanced; Credit: Unknown

A second example is shown in Figure 7.2 where the original image is in the left panel. The enhanced image in the right panel shows a toroidal shape between the craft and the treetops underneath.

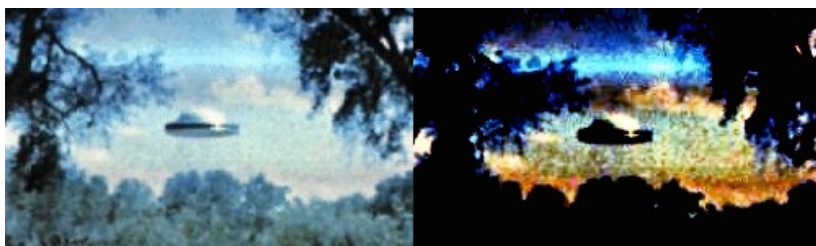


Figure 7.2 Example of an optical distortion below a craft -
Left panel: Original, Right panel: Enhanced; Credit: Peralta, 1963

Figure 7.3 shows a complex effect of the toroidal distortion on light refraction. The object in the photograph was fortuitously positioned over a rainbow in the background. The top panel shows the object in the original photograph. In the middle panel, the image was enhanced with equalization, and the torus is visible above the assumed craft. In the bottom panel, the position of the torus is marked for convenience with a graphical overlay.



Figure 7.3 Displacement of colours by the distortion; Top: Original, Middle: Enhanced, Bottom: Graphic overlay; Credit: Chris Malcheski (reproduced with permission)

Extraterrestrial Cosmology and Technology

It is clear in the enhanced image of Figure 7.3 that the colours of the rainbow are shifted where they intersect with the torus. At the bottom of the torus, the red colour of the rainbow is shifted left and covers the right end of the object. At the top, the purple colour of the rainbow is shifted to the right and overlays the red colour of the rainbow.

The shifting of the colours suggests that the refractive index of the torus differs from the adjoining space. However, the shifts at the top and bottom of the torus were in opposite directions, and so the refractive index changed sign. Perhaps a toroidal field having opposite polarities at the top and bottom could affect the refractive index in some unknown way.

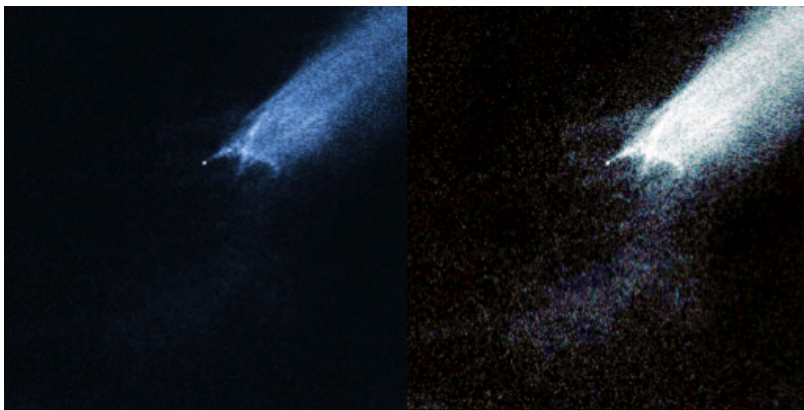


Figure 7.4 Hubble Telescope photo P2010_A2 -
Left panel: Original, Right panel: Enhanced; Credit: NASA, ESA,
and D. Jewitt (U. of Cal, Los Angeles), Photo No. STScI-2010-07

An unusual object in a Hubble space telescope image suggests that a craft might generate a gravitational field affecting empty space. NASA scientists speculated that the object in the left panel of Figure 7.4 resulted from a collision between two asteroids. However, the enhanced image in the right panel shows apparent debris organized in a semi-circular pattern passing through the object. This suggests that the object

may have been a craft that created a toroidal field beside it which organized a debris field. The debris would not necessarily have been distributed evenly around the torus if the field gradient were perpendicular to the surface of the torus.

7.1.1 Discussion

The toroidal feature in photos of UFOs was analyzed further in Treurniet (2021, Chapter 3). The analysis found that the torus could be caused by a change in the permeability of space. A change in that parameter would introduce both an altered ambient magnetic field and refraction of light. These effects were observed and suggest that the toroidal patterns are created by the propulsion systems of craft.

When a Zeta was asked to explain the toroidal shape visible near craft, they replied, *“the propulsion process that is providing a wake before or after the craft.”* It is an *“etheric representation of physical capacity of propulsion system.”* They emphasized that the distortion is caused by the etheric form of only part of the craft.

In the chapter on *Gravity*, the Zeta explained that both gravitational attraction and dematerialization depend on matter frequency. The etheric form of a craft materializes (i.e., can be experienced as physical) when its frequency is changed to the Earth vibration. The change in vibration may introduce the fields producing the optical distortion. Since the part of the craft that holds the propulsion system does not materialize, its vibration is not changed.

The following dialog with the Zeta discussed further the meaning of the toroidal distortion.

Interviewer: Can you explain what this shape is associated with?

Zeta: *The shape is a distortion in the energetic fabric of the environment. Because it is multidimensional, it is able to make craft move in all directions.*

Interviewer: So it's the etheric form of the craft?

Zeta: *Part of the craft, yes.*

Extraterrestrial Cosmology and Technology

Interviewer: I see, so it moves and the craft follows? Would that be how it works?

Zeta: *Both happening at the same time. No separation, not either or. To instruct craft via telepathic process, instantaneous, go there, yes, straight away.*

Interviewer: In the photographs, it appears that this etheric form is separated in space from the craft itself.

Zeta: *There is no separation, it is imagery.*

Interviewer: Both exactly one and the same object.

Zeta: *Yes. Your physical body has etheric template, yes? They are the same, but in separation both occurring at the same time.*

Interviewer: But my etheric body can be spatially separated from my physical body at times.

Zeta: *Always connected, never to be completely disconnected.*

Interviewer: So that's the same as with the craft?

Zeta: *All things, yes.*

The Zeta explained that only part of a craft is perceived as physical. A craft's etheric propulsion system is integrated with the rest of the craft but does not materialize. The toroidal pattern in the enhanced photographs represents "*a distortion in the energetic fabric of the environment*" and is the "*etheric representation of physical capacity of propulsion system.*" The propulsion system has an energy field which distorts the etheric representations of physical matter in the environment near the craft.

The chapter on *Gravity* gives a possible reason why the craft is never near the centre of the torus. The Zeta said that the vibration of the etheric form of a craft is altered to cause it to materialize, and the signal to change the vibration must be "*from an external source.*" This condition would be met if the signal originated from one side of the propulsion system, and if the part of the craft to materialize were on the

opposite side. The propulsion system of a craft, seen in photos as a toroidal distortion, would always be adjacent to the materialized craft.

Many other instances of toroidal patterns were found in association with unidentified objects that may be craft. These patterns do not have a fixed size relative to the craft. Some are small and some are very much larger than the craft. In most, if not all, of the photographs, the craft is either in contact with the torus or is a short distance away. It may also be just inside the circular pattern, but never at the centre. So the propulsion system appears not to have a fixed geometry. Its size may vary widely and it is not symmetric around the part of the craft that materializes.

7.2 The electromagnetic radiation shield

Physical mediumship séances are often held in Wallacia, a suburb of Sydney, Australia. On two such occasions, several people felt an anomalous ridge of higher resistance while walking in the open air. Paul Hamden, a medium who has learned to make mind-to-mind contact with extraterrestrial races, attributed the phenomenon to the Zeta race. He explained that occupants of a nearby Zeta craft had placed an invisible spherical dome over the site. The dome shielded the Zetas from natural and artificial electromagnetic radiation as they walked between a séance room and the craft. The thickness, length, and shape of a segment of the dome wall was estimated using the tactile effect on the human body. The anomaly is explained with an idealist cosmology described by the Zeta race.

The anomaly examined by the author in 2013 was a sensation on the skin felt by several people as a ridge of gentle resistance to their movement in the open air. It was encountered again at a nearby location in 2014 when it was studied more extensively.

7.2.1 Detection of the anomaly in 2013

Physical mediumship séances are held at Wallacia in buildings identified in Figure 7.1. A main house is shown in the upper left of the

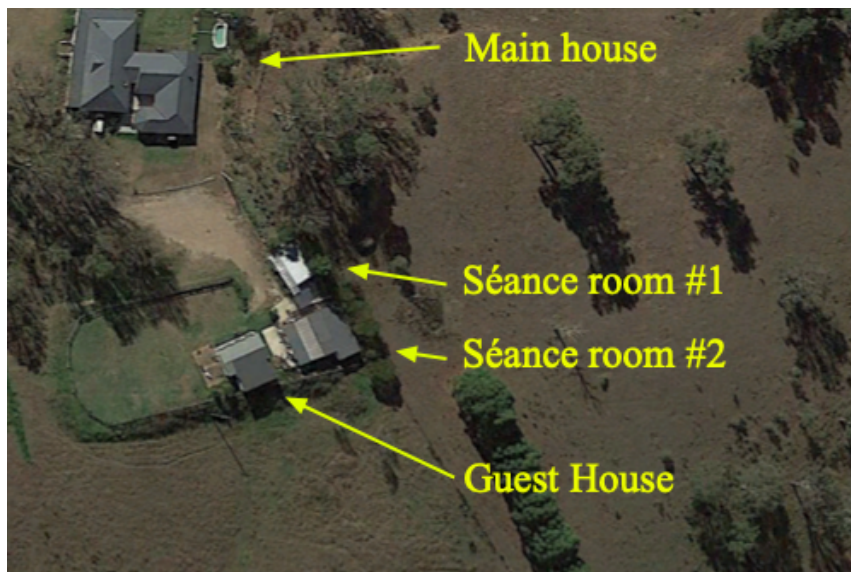


Figure 7.1. Buildings at the Wallacia Development Centre. Google Earth 7.3.4.8248 (5/2016) (Wallacia, Australia, -33° 55' 03 S, 150° 39' 29 E, 77m).

image. Just below it is a building complex composed of two séance rooms and a guest house.

In 2013, the author encountered a person outside Séance room #2 waiting for a séance to begin. She had just felt an unusual sensation in the open air while approaching Séance room #1 from the direction of the main house. He retraced her steps and felt a definite tactile sensation on the skin at a certain point as he walked along. The sensation was repeated several times by walking across the same physical location. The air was still, and the sensation was like passing through an invisible ridge of higher density air.

The medium, Paul Hamden, appeared just then to clarify what had occurred. He said the sensation of resistance was due to contact with an

invisible dome of energy placed over the séance rooms by extraterrestrial Zeta beings who were monitoring the event. He explained that the dome protected the Zetas from natural and artificially generated electromagnetic radiation. In a séance room soon after, a Zeta described via the medium the observed symmetry of the dome wall cross-section, “You were being influenced by the shield that was being created. ... The closer you came to it, the more your etheric body reacted to the shield, and the further you moved away from this device, the less you felt.”

7.2.2 Detection of the anomaly in 2014

The anomaly was detected again in 2014 during a similar event at the same venue. The author felt a sudden strong, uncomfortable sensation while slowly walking near the main house. He felt dizzy and somewhat nauseous until he distanced himself from the location. The medium, Paul Hamden, came from the house at that moment and advised that the sensations were caused by a dome of energy which had not yet been properly calibrated. As in the previous year, the medium explained that the dome was intended to protect the dematerialized Zeta bodies from the electromagnetic radiation in the environment. The shielding effect gave the Zetas freedom of movement between their craft and the séance rooms. During a following séance, a Zeta said via the medium, “*For us to come, we reinstate a spherical protective mechanism,*” and confirmed that the protective mechanism referred to the dome structure.

After the medium left the location of the detected anomaly, the author discovered that a sensation of maximum resistance could be localized by pacing back and forth across what was said to be the wall of the dome. A resistance was felt that varied according to the symmetric shape of a bell curve described by the Zeta in 2013. The thickness of the resistance was judged to be roughly 1-2 m. It was felt as high as the facial area, so it extended at least 1.5 m above the ground.

A length of the presumed dome wall was localized in the same way. Points on the ground about 6-8 m apart were marked where maximal



Figure 7.2. The estimated edge of the dome (in black) and the extrapolated circular boundary (in white). Google Earth 7.3.4.8248 (5/2016) (Wallacia, Australia, -33° 55' 03 S, 150° 39' 29 E, 77m).

resistance was felt. The continuous line connecting the points was about 50 m long and was curved as shown by the black line in Figure 7.2.

The black line was later extrapolated as the circle shown by the white line in the figure. The extrapolation suggests that the presumed dome wall at ground level was indeed circular with a diameter of about 100 m. Only the black line was measured directly since the terrain outside the property was not as accessible.

7.2.3 Discussion

The dome shielding the Zeta beings outside their craft was initially detected in 2013. A Zeta said afterwards, “*And now, interestingly, you*

Extraterrestrial Cosmology and Technology

were able to sense the energy and were able to walk away from the dome, ... You were being influenced by the shield that was being created near the sitting. And now, of course, the closer you came to it, the more your etheric body reacted to the shield, and the further you moved away from this device, the less you felt.”

The Zeta found it interesting that the human body was sensitive to the energy of the dome, and they confirmed that the intensity of the cross-section of the dome wall approximated a bell curve. The body was able to sense the decreasing intensity of its cross-section with increasing distance from the centre. A Zeta commented during the séance after the reoccurrence of the phenomenon in 2014, “*We reinstate a spherical protective mechanism.*” The statement is consistent with the circular path of resistance measured by the author near ground level.

The invisible static ridge of higher resistance felt in midair would be hard to explain with our scientific materialism. However, a framework based on ontological idealism (e.g., Kastrop, 2019) does suggest how a dome could have been formed and why the human body was able to sense it. Treurniet (2019) documented an idealist cosmology described by the Zeta beings during the interviews with them. According to the cosmology, all that exists is a unitary mental construct consisting of dynamical configurations of an energy of consciousness. The construct, known to the Zetas as total consciousness, is aware and has properties that include vibration and the intrinsic ability to create and perceive.

Under certain conditions, a being can form a thought and create a holographic-like representation of the thought known as quanta. Quanta are the enduring forms of thoughts in consciousness and are transformed to sensations by a being’s perceptual process so it can be experienced again. The being learns from the experience that a certain arrangement of sensations is a particular object of matter. Many beings experience a consensus reality when each transforms quanta with a perceptual process tuned to a common vibration.

According to the Zetas’ idealist cosmology, matter and physical energy are represented in consciousness by quanta. The quanta are transformed to sensations by a perceptual process tuned to match the vibrational

Extraterrestrial Cosmology and Technology

state of the quanta. But when the perceptual process is not matched to the quanta, the quanta are not transformed and no sensations are experienced. Without the matching perceptual process, the representations of physical matter in the energy of consciousness do not exist.

The cosmology also holds that the human etheric body is restricted to a range of consciousness vibrations that is part of a wider 'bandwidth'. When quanta encoded in this human range are transformed by the human perceptual process, the human experiences a physical object or body. The perceptual process behaves like a low-pass filter in that it can process only vibrations up to the being's *highest possible vibration*. The quanta of the Zeta bodies and craft are normally encoded with vibrations above the human's highest possible vibration. Consequently, the quanta representing the Zetas and their craft cannot be transformed by the human perceptual process. Therefore, the Zetas and their craft were not sensed by humans in the gatherings at Wallacia.

A Zeta said that the wave-like properties of the field of consciousness are altered vibrationally only by adjusting the parameters of frequency, energy, or resonance. If a Zeta technology altered the quanta underlying air molecules, the air might be made more resistant to human body movements. Such changes to the quanta of air molecules might be visually indistinguishable from the original air molecules but be experienced as an altered resistance to the sense of touch. That is, a human would feel a tactile difference without detecting a visual change.

8. Connections to human theories

Summary. *Some human science has features compatible with, or at least converging toward, the idealist cosmology of the Zetas. Close (2000) argued in the book, Transcendental Physics, that we live a completely mental existence. As in quantum theory, matter is represented as "a spectrum of potentialities." As in the Zeta cosmology, it is experienced when a perceptual process selects from the configuration in consciousness. A theory proposed by Hotson (2002a, 2002b, 2009) based on the Dirac equation appears to map onto the process described by the Zetas. The "Orch OR" theory of Hameroff and Penrose suggests that neurons communicate with proto-consciousness at the Planck scale. The proto-consciousness device offers a foothold toward an idealist model of consciousness. Finally, Sheldrake proposed a morphogenetic field theory in which non-material fields guide the development of physical processes. The morphogenetic field may occasionally have a function analogous to the body blueprint in consciousness.*

The science of the Zetas offers a cosmology based on the assumption of idealism, that all is connected as a complex "waveform" in consciousness space. This view contrasts with the philosophy of materialism which assumes that all is inanimate matter and that consciousness is merely the behaviour of any sufficiently complex

Extraterrestrial Cosmology and Technology

system made of matter. Assumptions such as these are behind the design and interpretation of any scientific experiment.

Human physics based on materialism is well developed and sophisticated. The so-called Standard Model of quantum mechanics makes very accurate predictions, and so satisfies many scientists and engineers who understand it. Nevertheless, there are doubts about the interpretation of quantum theory - in particular, the role the observer plays in how reality unfolds. For example, physicists now know that mere knowledge of an experimental procedure can affect what is measured.

The observer is also embedded in this space, and so is a necessary participant in any experiment. It should come as no big surprise that the experimenter's knowledge, or awareness, affects the experiment. This chapter examines how quantum theory might be conceptually integrated with the Zeta science.

A theory proposed by Hotson (2002a, 2002b, 2009) is also discussed. Hotson's theory is in some ways analogous to the Zeta description of the materialization process. Hotson developed his theory in reaction to perceived violations of physical laws that are accepted by most physicists. The theory is based on Dirac's relativistic generalization of the Schrödinger wave equation in quantum mechanics. It offers a physical understanding of the creation of matter which maps onto the Zeta description of how matter is created in consciousness space.

The "Orch OR" theory developed by Hameroff and Penrose (2014), a neurophysiologist and theoretical physicist, respectively, proposes a brain mechanism for connecting with a proto-consciousness located in the space/time geometry of the universe at the smallest possible scale. Consciousness is not all-pervasive in the theory. It exists independently of matter and is given a role to play in explaining awareness. The theory could move toward the idealism of the Zeta cosmology.

8.1 Transcendental physics

In the discussion of the Zeta cosmology in Treurniet (2019), the artificial barrier humans often place between science and spirituality is seen as unnecessary. The barrier currently exists primarily because of the unspoken assumption of materialism that underlies human science.

According to the Zeta cosmology, what we perceive as physical reality emerges from holographic-like interference patterns in the energy of consciousness known as quanta. The quanta are transformed to sensations by the perceptual process, an inherent operation of a being's consciousness. The sensations are usually experienced as external objects of matter by the mind of the perceiver.

These basic concepts are similar to the ideas expressed in the book, *"Transcendental Physics"* written in 2000 by Dr. Edward Close, a theoretical physicist and mathematician. Close presents his reasons for concluding that our physical reality is a strictly mental experience created by our perceptual processes.

Close examined the implications of certain advances in physics (EPR_BELL_ASPECT) that expanded on the Copenhagen interpretation of quantum mechanics proposed by Niels Bohr. This interpretation holds that at the quantum level there is no phenomenon until it registers as an observation or measurement. The critical experiments also lead to the conclusion that non-local systems that cannot communicate may yet share a common reality as expressed by the Copenhagen interpretation. We know this as quantum entanglement (Aspect, 1982, 1999).

Close also discussed the implications of the well-known delayed-choice double-slit experiment (e.g., Whitt, 2008; Whitt, 2010; Horgan, 1992; QuantumEraser, 2002; Walborn et al., 2002, 2003; Jacques, 2007; DelayChoice, 2015). Experiments of this nature direct coherent light toward two parallel slits in a screen. Photons of light pass through both slits and form an interference pattern visible on a second screen. The interference pattern indicates that the light behaves like a wave. However, when the paths taken by the photons can be determined, the interference pattern disappears and the photons behave as particles.

Extraterrestrial Cosmology and Technology

Whether it behaves as a particle or a wave depends on the state of knowledge about the apparatus at the instant when a measurement is taken. It could even be said that light quanta do not exist until the instant of measurement or observation; that is, the particles do not have a past. Close commented that the act of registering the phenomenon of light is equivalent to an elementary act of creation.

The results of the double-slit experiment suggested to Close that a photon does not exist as a particle before it strikes a receptor in the eye, and only the effect of the photon exists when an observation occurs. In turn, the elementary particles in the receptors do not exist until they have an effect on other receptors further along the chain of interactions to the brain. Matter and energy become objective entities when they register as effects.

So then what is the final receptor that can stop this otherwise infinite sequence of effects? Close argued that it must be something other than quanta of physical particles. He says, *“the final receptor completing an observation must be something real, existing beyond physical quanta, capable of receiving and properly organizing the distinct impressions of form and structure relayed by the effects of the quanta of matter and energy that we perceive as existing in an objective physical world. Since the interpretation of form and structure as information with meaning is a function of the conscious observer, this something must be closely related to, if not the very substance of, consciousness itself.”* According to Close, the final receptor in a conscious observer is real but non-physical. It cannot be composed of quanta of matter and/or energy. This final non-quantized receptor in the conscious observer he called *individualized consciousness*.

The same logic may be applied to the whole universe which is thought to have begun in an instant at the “big bang”. But how could the first quantum of energy have taken on an objective existence as a particle when no other particles existed for it to affect? Could the receptor of the first particle have been non-physical? Close argued that, as in the termination of the chain of effects in the conscious observer, there must have been a non-physical terminator to receive the first particle.

Extraterrestrial Cosmology and Technology

Otherwise, the physical universe as we know it could not have come into being. He called this receiver, *primary consciousness*.

Close reasoned that information carried by the final set of quanta in the physical chain of events forms non-quantized images of physical reality. This is where “*the structure of some selected aspects of primary consciousness is registered in individual consciousness.*” The construct is the instantiation of an abstraction in primary consciousness where abstractions of all possible constructs are held.

Close explained, “*Every observation is an instance of reality/primary consciousness observing itself. It is the completion of a self-referential loop. Structure and form, originating in primary consciousness, is projected as a spectrum of potentialities. The process is completed when one specific structure or form is selected by observation and confirmed again in the nonlocal space of consciousness.*” Primary consciousness presents the physical universe “*as a spectrum of potentialities*” as represented by Schrödinger’s wave equation in quantum mechanics (Harvey, 1962). Close concluded, “*...observable reality depends upon quanta, and that non-quantum consciousness, primary and individualized, are necessary ingredients of reality.*”

Close's reasoning about the crucial experiments endorsing the Copenhagen interpretation of quantum mechanics suggests that the bases of human science needs to be reinterpreted. Consciousness must have a continuous existence separable from the quantized universe of matter. According to Close, matter cannot exist without the *spectrum of potentialities* projected by the primary consciousness. Of course, the primary consciousness identified by Close is basic to the Zeta cosmology as well.

The Zetas referred to Close’s primary consciousness as total consciousness. They said, “*The void is a living entity of total consciousness, oligarchical in nature, and is partially living as an experience in separation, through illusion, of self through the vesture of matter. Each separation of consciousness is layers to perform many functions. Some levels of consciousness pervade the worlds of matter,*

Extraterrestrial Cosmology and Technology

whereas others are multifaceted in energetic form, each having the ability to exist as a race of beings in every form."

The total consciousness lives an "*experience in separation*", meaning that the one becomes many layers, some of which are experienced as worlds of matter and others as non-physical realms. Beings can exist in all these environments, and all are part of the experience of the total consciousness.

The Zetas emphasized that all is illusion at a deeper level of understanding, meaning all is a creation of consciousness. They agreed with Close that all that could possibly be exists in the energy of total consciousness. "*Consciousness has all information, but how consciousness reveals it to itself is a different process, nothing is created.*" The process of creation is primary or individualized consciousness "*activating certain areas of consciousness.*"

For all to exist in total consciousness, much must remain hidden as potentials, else there would be chaos. The process of creation described by the Zetas instantiates a selected subset of all possible experiences. Rather than creating a new pattern in the grid, a being's intent to create instantiates an existing potential.

The self-referential loop proposed by Close is also implied by this comment from a Zeta, "*Now remember that without matter, consciousness has no reflection, and so all consciousness exists from one source entity, but exists in matter as multiple races.*" Existence as a being of matter is consciousness reflecting itself to itself. An etheric body in consciousness projects potentials that encode its properties. The potentials are sampled by a being's perceptual process as sense information, and are transformed to consciousness potentials in a higher vibrational state. The consciousness potentials are experienced by the being as properties of matter like colour and smell. Total consciousness uses each being's perceptual process to experience a reflection of itself through matter.

A Zeta said, "*All physical matter has an etheric body*", and the etheric body contains potentials that define the physical object. The potentials

Extraterrestrial Cosmology and Technology

may be understood as the collection of wave functions defined by quantum mechanics as probabilities of a particular state of a particle. The Zeta agreed that matter is perceived when *“intention selects possibilities projected by etheric objects to create the physical illusion.”* The possibilities are equivalent to Close’s *spectrum of potentialities* provided by primary consciousness. The “collapse of the wave function” by observation is the selection by the observer from the possibilities projected by the etheric object.

The Zeta also said, *“Matter needs to exist in certain frequencies. For it to bind it needs this frequency.”* The coarse matter vibrations selected with our perceptions are the conjoined vibrations of finer matter. According to the Zeta, the binding of finer matter to make our coarse matter only occurs within a range of vibrations that define the etheric realm. And so, the Zeta explained, *“Many consciousness are based in the physical form they need to exist at.”* The consciousness of an entity wishing to have an experience with our matter universe is constrained to operate within this same range of vibrational states.

Further, they observed, *“Matter defines experience of consciousness, in as it limits potential.”* The potentials of consciousness that can be activated are limited in the etheric illusion of matter. For example, the colours experienced in matter may have a much smaller range than colours seen in another realm during a near-death experience (Alexander, 2012).

If perception by a conscious being brings the illusion of matter into existence, we may, like Close (2000), ask what happens when there is no conscious being present. For example, craters were formed on the moon when it was struck by large objects, even when no living beings were there to perceive the events. The Zeta was asked, “Does matter interact with matter even when there is no individual consciousness there to perceive it?” They answered, *“There is perception at all levels, even if the prime focus is not in existence”* (see the chapter, *Prime focus and physical reality*). All matter is based in consciousness, and all levels or states of vibration have an ability to perceive. Even without the presence of an individual being, total consciousness perceives.

A link to quantum theory can be made if we recognize potentials in the etheric representations as quantum states. The being's perceptual process then selects the most probable of these quantum states as defined by the Schrödinger equation of quantum mechanics (e.g., Harvey, 1962). The consciousness potentials instantiated by the perceptual process are the sensations experienced by the perceiver. Such sensations are the means whereby the physical universe is known, and so the physical universe exists in consciousness. It has only the appearance of objects existing in separation from the observer. As stated by a Zeta, "... *it is consciousness that has created the illusion of matter.*"

8.2 A theory of materialization

The Zeta cosmology holds that matter is an illusion in the sense that it is experienced in consciousness after an etheric representation is transformed by the perceptual process. But the Zetas have also discussed the formation of matter from the point of view of particles on a spectrum of granularity. There are successive stages of physical particles of increasing size, each associated with a corresponding etheric pattern. Our familiar coarse matter objects are conglomerations of finer particles.

Apports are objects that form in thin air and fall to the ground as persistent matter. They are described as coarse matter objects created from finer matter. But even finer matter is transformed from corresponding etheric patterns or quanta. The etheric and physical descriptions carry the same information. The particles that form apports are still constructs in consciousness. At our level of knowledge in the earlier interviews with the Zetas, they sometimes found the perspective of particles more convenient than the etheric representations for explaining the existence of matter.

The process for making apports was described by the Zetas in Treurniet and Hamden (2022, *A physics of materialization*). An explanation for the phenomenon is also derived here from a well-known yet controversial equation formulated by Paul Dirac who was awarded the

Extraterrestrial Cosmology and Technology

Nobel Prize in Physics in 1933. The equation is a relativistic generalization of the Schrödinger wave equation in quantum mechanics. It is well known today for successfully predicting the existence of anti-matter such as the positron. The implications of the equation were developed by Donald L. Hotson ([2002a](#), [2002b](#), [2009](#)) into a novel conceptual theory to address commonly accepted non-causal effects in current theories of physics.

Remarkably, Hotson's interpretation of the Dirac equation offers a mechanism for the creation of matter that is consistent with the Zeta's explanation of materialization. Only the most pertinent contents of Hotson's articles will be mentioned here.

The interpretation of the Dirac equation is controversial since it predicts twice as many particle states as were expected. In particular, it predicts the existence of both positive and negative-energy electrons and positrons. Negative-energy states are considered physically impossible by most physicists. Nevertheless, Dirac proposed the existence of a sea of negative-energy particles interspersed with our familiar positive-energy matter. It is filled with unlimited numbers of polarized electron-positron pairs which Hotson named "epos". In this negative energy state, the epos are thought to vibrate in multiple dimensions, some of which are imaginary (in a mathematical sense) where they would have lower energy. The epos that have actually been found to surround a positive-energy ion are therefore not created, but simply show themselves following a change of state. They pop up in the positive energy range when the epos vectors point in real directions.

A positron may be described as an out-of-phase electron, and so the polarized epo has a different version of the same particle at each end. The epo is said to be "charge condensed" so that each charge is affected mostly by its oppositely charged partner. The negative-energy epo has no mass or inertia and so is not detectable. Hotson contends that the negative-energy sea of epos must exist in the form of a Bose-Einstein Condensate (BEC) (Perkowitz, 2008), and that our reality is immersed in the BEC.

Extraterrestrial Cosmology and Technology

In the BEC, charges are always balanced and negative energy must predominate. The whole BEC is described by a single quantum mechanical wave function and behaves as a unit rather than as a collection of individual particles. Hotson describes the BEC as an energetic machine that is a hive of activity. Charges travel at the speed of light filling every available dimension. But in spite of the charge condensed nature of the epos, like charges must frequently meet and repel each other in the crowded BEC environment, and their energies may become positive. The positive energy manifests in our normal reality as particles with mass.

Because the Dirac equation has four roots, Hotson proposed that everything must be made of electrons and positrons with positive and negative energies. The early universe was composed of neutrons, so a neutron must be made of epos. Consistent with this is the observation that the diameter of a neutron is the same as the length of an epos. Hotson suggested that 9180 electron-positron pairs with spin energy in ten dimensions are a stable arrangement, making an object with a neutral charge. Such an object may be formed in the BEC from random fluctuations of spins in the ten dimensions. When by chance the object has positive energy with spin energy in all ten dimensions, it is expelled from the BEC as a neutron. When it appears in the positive energy domain, the neutron may decay to a proton and an electron, and of course, these are all constituents of atoms and molecules.

Hotson described a process of random fluctuations of the ten-dimensional epos spin vectors in the all-encompassing BEC to form a positive energy neutron, while the Zetas described the coordination of invisible fine matter by consciousness to form matter that we see as ectoplasm and apparitions. The following examination indicates that these two processes are similar.

The Zeta model introduced the concept of a spectrum of granularity for describing matter. At the coarsest end of the spectrum is matter that we normally experience, so this must be positive-energy matter such as the nucleons or larger. The electron was given by a Zeta as an example of non-combined finer matter. It follows that the epos is a form of finer

matter since it consists of a positive and a negative electron. These are each the same particle differing only in phase. We can say, therefore, that the epos in the BEC with their randomly oriented spin vectors fall somewhere towards the fine end of the matter granularity spectrum, and would be described by the Zetas as non-organized finer matter.

While Hotson attributed the formation of a positive-energy structure in the BEC entirely to random fluctuations, the Zeta model says consciousness can promote such an organization by imposing a “*framework of materialization*” on the finer matter. In the case of an apport, this framework is the mirror image of an etheric body copied from an identical object. Consciousness biases the orientation of epos spin vectors from imaginary to real directions so that finer matter structures in the framework assume a positive energy. If the structures were the size of 9180 epos, the resulting stable object would be forced out of the BEC and enter the coarsest state of matter as a neutron.

The mechanism proposed from Hotson's theory must be only part of the process since apports are made of more than just neutrons. Perhaps the framework of materialization can form more complex kinds of coarse matter. The Zeta says that created matter “*is seen as certain elements, some of a finer framework, others of a gross process.*” The pluralization in “*others of a gross process*” suggests that more than neutrons can be created as coarse matter.

The comment may refer to the carbon atoms formed by the energy of consciousness. Hotson proposed that a proton or a neutron may emerge from the BEC when the energy of a cluster of epos becomes positive, while the Zetas explained that fine matter is drawn together by consciousness. A carbon atom can form from the combination of three helium nuclei (i.e., alpha particles), each consisting of two protons and two neutrons (Epelbaum, 2011; [ScienceDaily](#), 2011). These would be organized as required by an apport's etheric body, the template for the physical object.

The creation of positive-energy matter was described in different ways by Hotson and the Zetas. Nevertheless, it is easy to see by analogy how they correspond. For example, Hotson's model offers information about

the framework of materialization acted upon by consciousness in the Zeta's model, and the kind of manipulation needed to create matter. The framework of materialization is embedded in a field of epos, and consciousness may change the orientations of the epos spin vectors so that the energy of a structure within the framework becomes positive. The resulting nucleon is ejected from the BEC.

In turn, the Zeta model says that a spectrum of matter granularity coexists with the coarsest granularity of our physical reality. The spectrum consists of multiple layers, and the finer layers may be undetectable by our senses and instruments. The Zeta's assertion that there are multiple layers suggests that the epos layer is filled in a similar manner from an even finer layer. Like the BEC, each layer would contain only objects satisfying constraints unique to that layer.

8.3 The “Orch OR” model of consciousness

The anesthesiologist, Stuart Hameroff, and the physicist, Roger Penrose, proposed a theory to explain how cellular processes in the brain communicate with consciousness (Hameroff, 1998; Hameroff and Penrose, 2014). The theory suggested that consciousness exists in the spacetime geometry of the universe at the smallest possible scale. Cells in the brain communicate with consciousness via a quantum process that Penrose calls “orchestrated objective reduction”, or “Orch OR”. This process is said to occur in microtubules which are part of a cytoskeleton structure present in some form in all cells of the body.

According to Hameroff, “precursors of consciousness, proto-conscious qualia, as well as precursors of mass, spin, electrical charge and other fundamental components” exist at the level of Planck scale geometry (Hameroff and Chopra, 2010). The experience of consciousness arises from communication between the microtubules and the precursors of consciousness via a sequence of quantum computations. The felt sensations, or qualia, receive special treatment in recognition of their status as non-matter. Qualia are felt when the “proto-consciousness” is activated by the Orch OR quantum process. The precursors of

consciousness and of matter are reminiscent of the consciousness potentials of the Zetas' cosmological framework.

Although the theory does not acknowledge a cosmology based on consciousness, it could evolve in that direction. The Orch OR quantum process may indeed communicate with a configuration of consciousness, but it could be the etheric body rather than Hameroff's "precursors of consciousness." In a discussion of the nature of light, a Zeta revealed, "*Light is also used as a mechanism for life stimulation, to excite the potential of a cellular structure. Without light, many would perish. The physical body is able to convert light to the necessary components required to survive.*" Perhaps the Orch OR quantum process transmutes physical energy in the form of photons to etheric energy.

A mechanism for accumulating and distributing the energy of photons throughout the body was suggested in the chapter, *Etheric energy from hemoglobin*. The authors proposed that infrared energy is accumulated by deoxygenated hemoglobin in the red blood cells of the circulatory system. When the hemoglobin is re-oxygenated, the energy is radiated at a lower frequency to cellular processes in the body. The Zeta agreed, "*Yes, hemoglobin is involved as an increase of oxygenated blood is cycled through an entity. In doing so, the energy of the human form is assimilated to the etheric body.*" If the Orch OR quantum process does take place in the microtubules as proposed, it may excite the quanta of the etheric body in consciousness with the energy radiated from the red blood cells.

8.4 Morphogenetic fields

The biologist, Rupert Sheldrake, is a proponent of a model of reality that goes beyond materialism. He is best known for his theory of formative causation, the idea that nature has memory (Sheldrake, 2009). He proposed that formation of objects like crystals and biological bodies are guided by non-physical morphogenetic fields.

The shape of a body of matter resonates with a field representing that class of shapes. To affect a developing biological body, the

Extraterrestrial Cosmology and Technology

morphogenetic field would work in concert with the available genetic material. The field is reminiscent of the body blueprint introduced earlier in the discussion of self-healing.

Sheldrake also proposed that a sequence of learned behaviours can be represented in a morphogenetic field, and so laboratory animals would learn a task more easily if it were previously learned by different animals. He believed that consciousness is “restricted to human beings and, perhaps, some of the higher order of animals” (Sheldrake, 1988). He would not have accepted that a universal consciousness could be the foundation of a cosmology. However, in more recent publications, he appeared open to the possibility (Sheldrake, 2009; 2013).

9. The concept of prime focus

Summary. *A prime focus is the extent of a being's awareness of information in the energy of consciousness. When the being's prime focus encompasses information in the etheric realm, a perceptual process transforms the information into physical experiences. The being can also affect the outcome of a process by selecting quantum states consistent with expectations. Whether we choose to employ the etheric or the physical representation in discussions is a matter of convenience and utility.*

9.1 The role of the *prime focus*

Etheric patterns are transformed by the perceptual process when they are included in the awareness of a being. A Zeta suggested that the extent of a being's awareness be known as the *prime focus*. When there is not a *prime focus*, objects can still interact according to the properties defined in the etheric representations. A Zeta was asked, "Does matter interact with matter even when there is no individual consciousness there to perceive it?" The being answered, "*There is perception at all levels, even if the prime focus is not in existence.*"

The *prime focus* in the Zeta's answer refers to the awareness of the individual consciousness mentioned in the question. In the basic double-

slit experiment (e.g., Whitt, 2008; Whitt, 2010; Horgan, 1992), a photon exhibits the properties of a particle or a wave. When the path of a photon through the experimental apparatus can be known in principle, a *prime focus* exists and the photon is observed to behave as a particle. When the path cannot be known, there is no *prime focus* and the photons behave as a wave by forming an interference pattern. They still interact with the experimental apparatus, however, so the presence of the *prime focus* of an individual consciousness is not a prerequisite for matter to interact with matter.

Experiments by Radin et al. (2012, 2013, 2016) showed more directly that the double slit apparatus is sensitive to mental influences. For example, Radin, Michel, and Delorme (2016) found that intentions of remote observers caused a significant shift in the amplitude of the displayed interference pattern. The experiments showed that “the mind is an inextricable part of the measurement process.” Physicists are generally reluctant to attribute physical effects to observer consciousness, but these results do appear to depend on the *prime focus* of the participants in the experiments.

Without the *prime focus*, the photons form an interference pattern which results from the wave-like characteristics of the light. The wave represents the superposition of all possible quantum states of the photons. However, when a being with a *prime focus* can know the paths taken by the photons, states are chosen from the spectrum of possible states by the being’s perceptual process. The Zeta said, “... *it is the consciousness that creates the state, and it is consciousness that has created the illusion of matter.*” The selected states cause the photons to be experienced as particles rather than as waves.

9.2 The local consciousness and *prime focus*

A human body persists as long as its information exists in the etheric realm. A Zeta explained, “*Your etheric body is a resonating form of energy. It is able to on many frequencies understand emotions, energies, interchange of energy, and matter to energy.*” The body processes are said to have the properties of “*frequency, energy and resonance*” in the

Extraterrestrial Cosmology and Technology

etheric realm. These words describe the attributes of an etheric pattern in a vibrating medium. However, the etheric pattern is experienced as a physical body when it is transformed by the perceptual process in the consciousness of the observer.

The physical body has essentially the same information as the etheric body since one is the transformation of the other. However, the information in a physical object within the *prime focus* is not always identical to that of possible representations in consciousness. The Zeta said, “*Matter defines experience of consciousness in as it limits potential.*” That is, if a being’s visual system does not have the ability to see a colour, objects in the *prime focus* will always lack that colour. A being’s perceptual process cannot sense a consciousness potential for that colour if the visual apparatus fails to evoke it. When the potential for the colour is not selected, instantiation of the consciousness potential for that colour cannot occur and it is not experienced.

From a practical point of view, the relationship between the physical experience and processes in consciousness are not quite symmetrical even when all the etheric information is transformed successfully by the perceptual process. It would be difficult to describe internal cellular activity, for example, if a cell were represented only as a holographic interference pattern. The physical representation is more useful for understanding specific bodily changes. For example, a Zeta explained that a cut of the physical skin by a knife would activate etheric body processes to heal the wound. The location of the physical injury identified a specific element of the body, while the etheric reference pertained to the body in general.

In the double-slit experiment, the photon behaves like a particle of matter when the experimental apparatus is included in the *prime focus*, or possible awareness, of the experimenter. Similarly, a being’s local consciousness experiences its container body as physical when the body is in its *prime focus*. When the local consciousness leaves the etheric body and the *prime focus* is lost, the physical body ceases to function. One could say that having a *prime focus* is a big part of having a local

consciousness, and that the container body is always in *prime focus* while the consciousness is merged with the etheric body.

If the body were not held in *prime focus*, the perceptual process could not take place and so consciousness potentials or sensations would not be selected. Of course, then the normal self-healing processes of the body could also not function and the body would deteriorate (Treurniet and Hamden, 2022, *Health and healing*). In terms of quantum theory, all states would be superposed and the etheric body would become like other matter not in *prime focus*. To the local consciousness of an external observer, the non-living container body would gradually decompose.

In general, when any two etheric objects interact in the absence of a *prime focus*, all etheric potentials are superposed in the process. The Zeta agreed that there is still a primary consciousness that perceives even when there is no *prime focus*. They added, “*All consciousness exist when matter does not.*” The Zeta also agreed with an interviewer that “at some level, all possibilities are being selected, or perceived, by consciousness and so all matter persists and interacts.” So all possible states of an etheric body are superposed when there is no *prime focus*, and the superposed states of the two bodies may interact in the awareness of total consciousness.

9.3 Summary

The Zetas’ concept of *prime focus* is defined by the extent of a being’s awareness of information in the energy of consciousness. When the being’s *prime focus* encompasses information in consciousness, a perceptual process transforms the information into physical experiences. Whether we choose to employ the etheric or the physical representation in discussions is a matter of convenience and utility. When there is no *prime focus*, superposed etheric potentials of objects interact in that form to change the environment.

10. The holographic principle

Summary. The extraterrestrial Zeta beings spoke extensively about a cosmology in which the universe is a singular creation of consciousness. Representations in consciousness, known as quanta, are created by thoughts and intentions. They are maintained in the vibrating energy of consciousness in a structure known as the grid. The quanta are holographic-like patterns consistent with the holographic principle; that is, they are two-dimensional representations that define an observer's experience in a three-dimensional space. Hameiri (2013) proposed that a grid in the zero-point field encodes information holographically, and this is also described in the Zeta cosmology. However, instead of a materialistic construct of random activity, the zero-point field would be a grid in the energy of consciousness where matter is represented.

At the beginning of the 20th century, Max Planck deduced from the dimensional analysis of certain equations that it made no sense to speak of distances smaller than a minimum distance. That distance, now known as the Planck length, is equal to 1.616229×10^{-35} m. More

recently, some theoretical physicists (e.g., Sarg, 2006; Haramain, 2013a) have proposed a space-filling grid at or near the Planck scale.

Haramain (2013a) suggested that a vacuum energy oscillator, the “Planck spherical unit” (PSU), could be the basis of a quantum gravitational framework of a discrete spacetime. The three-dimensional packing of PSUs defines a grid with units the size of the Planck length. The grid has properties useful for conceptualizing what is known as the holographic principle. It states that the physics in a certain region of space is described by the information on the surface area of its boundary, and that one bit of information is encoded by a Planck area. The holographic principle was initially proposed for the analysis of black holes by 't Hooft (1993) and Susskind (1994).

The concept of a grid with multiple dimensions also appears in a cosmology from a non-human source - extraterrestrial Zeta beings speaking through the medium, Paul Hamden (2012). The framework of the cosmology (see chapter, *The Zeta cosmology*) proposes that every entity in our physical universe is a configuration of consciousness analogous to a hologram. Further, an important property of consciousness is the dimension of vibration. Every configuration, including the holographic-like entity, has a particular vibration. The vibrating grid is a quantized substrate in consciousness on which the holographic-like representations of matter objects are found. We experience these patterns as discrete objects when they are acted upon by our perceptual process. The perceptual process transforms the patterns to consciousness potentials which are experienced as sensations.

Haramain's grid consisting of PSUs could be the same grid that the Zetas mentioned in their discussions. Conversely, the Zetas' use of the hologram-like representation for encoding information suggests they employ the holographic principle to represent reality. The evidence suggests it may be possible to merge human physics with a higher reality based on the heretofore unrecognized energy of consciousness.

10.1 The nature of quanta

In their discussions of some technical processes, the Zetas occasionally used the word, *quanta*, without saying what it means. The word suggests a process where data is quantized, and the quotes in the following paragraphs offer insights concerning the precise meaning.

In a discussion about the nature of the human body, the Zeta informed us of a homeostatic process involved in self-healing. They explained that a blueprint of a being's body is encoded in the potentials of its *highest possible vibration* in the local consciousness. The Zeta said, *"Living organisms have within them, around them, the potential for the etheric body to understand what is the physical potential of the energetic potential of the consciousness potential."* The information is transposed in vibration to the physical level of the etheric body. The latter exists in the etheric realm, the range of vibrations of consciousness in which our matter universe is defined.

When the body is injured, vortices form in the etheric body at the site of the injury. These participate in the healing process by transmuting the energy containing information about how to heal. The Zeta explained, *"Underneath the energy is consciousness. It is the quanta information of the cellular structure of a human body. That consciousness indicates from beneath at the lowest levels, or the highest levels, of what is the action of the re-creation of the cellular process, and of course, all other potentials then exist. The energy then is actively working towards healing the physical cellular disruption."* The transposed blueprint information is represented in the etheric body by potentials that the Zeta describes as *"quanta information of the cellular structure"*. From the context, the word *quanta* suggests that the information about cellular structure is quantized. It appears that *quanta* refers to the holographic-like pattern in the grid that represents the physical body.

This meaning of the word *quanta* is supported by another quote where it is used. The perceptual process, intrinsic to consciousness, samples etheric potentials from the holographic-like pattern representing an object. The samples are transformed to higher-vibration consciousness potentials which are the being's felt sensations. In the following

comment on the perception of colour, the Zeta explains, “*Perception is gained from different types of acknowledgement of colour process so, a human’s perception based in quanta in regards to colour processes is generally able to determine the same standard colour processes for each individual item. We abide by that quanta process.*” The phrase, “*perception based in quanta*” appears equivalent to “*perception based in sampling a holographic-like pattern*”, and so *quanta* refers to the quantized holographic-like pattern representing an object in the grid. In general, quanta are the outcome of the creation process.

Analysis

A single PSU in Haremein’s grid is a quantum of information. The plural form, the *quanta* used by the Zetas, could refer to an array of PSUs that encodes a holographic-like pattern from the creation process.

10.2 The grid

Haremein (2013a) proposed a generalized holographic principle based on the relationship between the interior volume of PSUs and the surface area. He showed that the generalization is applicable to not only the study of black holes, but also to other areas of physics. His novel approach gave the known Schwarzschild solution to Einstein’s field equations for a gravitational field outside a spherical body. It also gave a very accurate value for the rest mass of a proton (Haremein, 2013a, 2013b), as well as other physical parameters such as an angular frequency of matter. The angular frequency was defined as time taken for a particle to decay via the strong interaction.

In our discussions with the Zetas, they were often asked specific questions about the nature of reality. Their responses indicated that all existence is a manifestation of consciousness. However, much of what exists is inaccessible to us because of the property of vibration. Vibration is an ordinal dimension of consciousness and every being is at a certain level on this dimension.

Every being has a *highest possible vibration*. That is, the being behaves like a low-pass filter. It is typically aware only of grid contents that have

Extraterrestrial Cosmology and Technology

a state of vibration the same or lower than its own. When a being thinks of something to create, it modulates its *highest possible vibration* with the vibration of the thought. The holographic-like pattern resulting from this creation process is placed in the grid at the being's *highest possible vibration*.

The Zeta said of the grid, “*The resonant energy of the grid or the matrix is not just part of this planet, the grid is like a fluctuating wave vibrating through the universe. It holds all space and time. ... It is a manifestation of universal energies, everything has a resonating grid – every specific energy has its own grid. ... The grid emanates from each planet but is also joined as one. Every physical individual item has its own grid and links into the main grid, everything is all! ... Is the grid consciousness? Yes it is. Is the grid being fed by other types of consciousness? Yes, because you are an energetic being. ... But for the grid to be in its true state, there is no form for the grid*” (Hamden, 2012).

The Zeta stated that the grid is consciousness. They also said that the grid interacts with other configurations of consciousness such as beings like us who create. In the absence of a creation where nothing exists, the grid is in its *true state*. In nothingness, there would be no context like space/time and the grid has no form.

Analysis

Haramain's claim of predicting very accurate values for fundamental parameters like the mass of a proton presupposes the existence of a grid at the Planck scale. A similar concept of a grid is the substrate for the Zetas' holographic-like representations of matter. In both cases, the same grid may encode information. A PSU encodes one bit of information according to the holographic principle, and the information encoded in a grid-like array of PSUs are the holographic-like representations of matter, or *quanta*.

If the Zetas' grid in consciousness is equivalent to Haramain's array of PSUs at the Planck scale, then Haramain's grid must also be a construct of consciousness. Further, Haramain refers to a PSU as a *spherical*

Planck vacuum oscillator which encodes information. An array of such oscillators implements what is known as the zero-point field, a sea of zero-point energy. Hamein's grid and the Zetas' grid share the property of vibration. Further, if both grids are the same grid, the zero-point field in consciousness holds the holographic encodings of matter resulting from the creative processes of beings.

10.2.1 Zeta craft propulsion

In the interviews, a Zeta revealed that the grid is a component of their technologies. They described how their craft move in space by using the grid for propulsion.

- *Imagine if you will a single sheet of fabric. ... Now place many layers of fabric together, you now have a three-dimensional block of fabric. The threads are interwoven, directional.*
- *There is a basic life force woven into the fabric of the universe. This energetic form, waveform, feeds and nourishes these cellular craft.*

The grid is pictured as a three-dimensional block of fabric.

- *If the fabric is of an energetic nature, then there is a strong matrix of threads between all layers. This means, in a physical universe, a craft can manoeuvre forwards, backwards, diagonally and sideways. The craft are moving on etheric rails. They are drawn into the craft and used as a "matter of state" propulsion process. These rails are of a nature that the craft can move in any direction as it is using the matrix like a tractor beam. The craft is taken, pulled, in the direction it wishes to go. The matrix is a living field. The sentient entity which is the craft is able to negotiate the rails by consciousness.*

The craft moves through the grid by pulling itself along the etheric "threads" of the grid. This enables movement in three dimensions in the matter universe. The grid is described as a living field, and the sentient craft maneuvers through the grid using the energy of consciousness.

- *When the fabric is folded upon itself, it acts cylindrically. A craft is able to manoeuvre back to its original point by simply "hopping" from one state to the next.*

When the grid is rolled up like a four-dimensional cylinder, the craft is able to move great distances instantaneously in three dimensions.

Analysis

The discussion of craft propulsion tells us how a craft could propel itself with the energy of consciousness using the three-dimensional array of PSUs we assume to be constructs in consciousness.

10.2.2 Synthetic quantum environments

The Zetas said that a “*matrix of reality*” represents a given environment experienced as matter, and so the matrix holds the quanta which encode information. The matrix can be copied by a Zeta technology to create what is known as a synthetic quantum environment or SQE. The copy has several uses including simulation of an environment for an experiment that could be destructive. Using the simulation avoids damaging the original environment. They said, “*There is a device that is used to create the unfolding of the special process and then once the cavity, I believe would be the word, is created, it is then populated with the correct molecular image that will then represent the environment that was to be used for exchange of energy and information.*”

A Zeta described the process, “*So depending on what you wish to create and preserve as an environment, would determine the level of quantum entanglement that is required by a being that is to synthesize the energetic entities, and to then propagate this as a sustainable existence in its quantum self. Many of the SQEs are in existence for the scientific beings who wish to experiment within a race. A snap shot is taken and using the SQE, transpose the environment, and using the SQE then instigate change. This is a mirror image process to see what is sustainable, and in that place no harm is created to a physical entity as it is an energetic environment.*

The description of how the SQE is created includes several indications that the process has quantum properties. Mention of quantum entanglement suggests that the copy is made by realizing particles that are entangled with the particles in the physical environment. This was

also suggested by describing the creation of the SQE as “*a mirror image process*”, since the quantum states of entangled particles can be described as mirror images of each other. The *sustainable existence in its quantum self* suggests that the copy of the environment is the usual holographic-like pattern or *quanta* representing the environment’s mirror image.

The phrase, *transpose the environment*, indicates that the vibrational state of the copy in the SQE is different from the state of the original environment. An apt comparison would be transposing music to a different key.

Analysis

The information representing our physical reality is encoded as quanta, the holographic-like patterns the Zeta identified as a “*matrix of reality*.” The Zeta technology copies the matrix by taking the mirror image of the quantum states encoded in the targeted section of the grid, perhaps in an array of the PSUs defined by Hamein (2013a). The vibrational state of the original environment may be transposed to a higher or lower vibration of the copy.

10.3 Discussion

A quantized physical universe is part of the Zeta cosmology. The Zetas assumed a spatial quantization in the discussions on craft propulsion, on craft dematerialization, on the creation of a synthetic quantum environment, and on the homeostatic process of healing the body. They described a multidimensional grid construct in consciousness which supports a quantized reality created by mental activity. In the Zeta cosmology, the grid is an all-pervasive configuration of consciousness. It is understood as the substrate for the holographic-like patterns or quanta created by mental processes. The quanta are experienced by beings as sensations when they are transformed by the perceptual process.

In the Zeta cosmology, the concept of a hologram is employed in the creation of quanta, and it also appears in the statement of the

holographic principle by several human scientists. According to this principle, the physics in a region of space is described by the information on the surface area of its boundary (t'Hooft, 1993; Sussmann, 1994; Bekenstein, 2003; Haremein, 2013a). The encoding of the information in a volume on a two-dimensional surface is analogous to a hologram. The quanta of the Zeta cosmology are holographic-like representations consistent with the holographic principle.

t'Hooft (1993) presented the original idea of a holographic-like representation of reality in the quote, "Given any closed surface, we can represent all that happens inside it by degrees of freedom on this surface itself." He suggested further, "Quantum gravity should be described entirely by a topological quantum field theory, in which all physical degrees of freedom can be projected onto the boundary. One Boolean variable per Planckian surface element should suffice."

Susskind (1994) agreed with t'Hooft, "The number of degrees of freedom should be no larger than that of a two dimensional lattice with approximately one binary degree of freedom per Planck area. In other words the world is in a certain sense a two dimensional lattice of spins." He proposed the physical mechanism of a binary spin to encode a bit of information.

Haremein's PSUs could be given the property of spin as proposed by Susskind, so each PSU could encode one bit of information. An array of PSUs could then encode the created quanta described by the Zetas.

The holographic principle does not explain how quanta would be formed or perceived. Susskind (1994) could only suggest, "In some way, the phenomena taking place in three dimensional space can be projected onto a distant "viewing screen" with no loss of information." These physicists have no concept of how the information in the three-dimensional environment could be encoded in some two-dimensional lattice, much less perceived by a conscious entity.

In retrospect, the holographic principle proposed by human scientists may be an acknowledgement that the Zeta cosmology based on consciousness is correct. A Zeta once said, *"The grid process is much*

aligned with the nature of all things being connected. Your scientists are now understanding the relationship between the subatomic particles, and that the state is determined by its relationship to other particles, but they do not understand that it is the consciousness that creates the state, and it is consciousness that has created the illusion of matter.” No doubt, it will be some time before information encoded in a grid construct of consciousness is generally accepted as a representation of reality.

The concept of a grid in three-dimensions was employed by Haremein (2013a) primarily as a vehicle for algebraic calculations of physical parameters. Haremein’s grid composed of “Planck spherical units” (PSUs) is a limited form of the Zetas’ multidimensional grid. It should have the capacity to encode information contained in the holographic-like patterns resulting from the creative process. It offers a way to represent information about the physical world as suggested by the holographic principle.

The following list of properties of the grid assumes that the latter is homologous to the array of PSUs. The properties describing the grid are from the point of view of the Zetas and of Haremein (2013a).

- The grid, or array of PSUs, is a construct of consciousness.
- A single PSU in the grid holds one bit of information.
- A PSU is also called a *spherical Planck vacuum oscillator*. An array of such oscillators would implement the sea of zero-point energy. The grid composed of PSUs and the grid described by the Zetas both have the property of vibration.
- *Quanta* refer to holographic-like encodings of created thought processes which may be digitally encoded in arrays of PSUs.
- A Zeta craft moves in the grid using the energy of consciousness by pulling on the grid’s etheric threads, or the array of PSUs.
- An environment of matter is represented as information encoded in the quanta of the grid. It is also known as a *matrix of reality* that can be copied to a *synthetic quantum environment* by a Zeta technology.

Extraterrestrial Cosmology and Technology

The cosmology of the Zetas tells us how the holographic principle is instantiated. The quanta are created with thought and intention in the vibrating energy of consciousness. They are represented in the grid and are then experienced again in the mind of an observer via the perceptual process intrinsic to consciousness.

11. Propagation of light

Summary. *An hypothesis concerning the nature of light was justified with quotes from conversations with extraterrestrial Zeta beings. The hypothesis proposed that a newly created particle of a certain vibration will resonate with the corresponding vibration in a field of consciousness. The resonation amplifies the energy and causes it to appear as an element of a grid. The grid will propagate the energy of the particle, and is proposed as the medium for light propagation. Consciousness as the medium would integrate Maxwell's theory of electromagnetism with the Zeta cosmology.*

Maxwell's theory of electromagnetism (Kip, 1969; Lerner, 2019) is the predominant theory of electromagnetic (EM) waves. Light is, of course, part of the electromagnetic spectrum. The theory holds that an electric charge is the source of an electric field, and electric lines of force begin and end on electric charges. Magnetic lines of force always form closed loops and can be induced by moving electric charges. Finally, a flow of electrons is generated in a conductor as it passes through magnetic lines of force. The mathematical theory accurately predicts the behaviours of electric and magnetic fields. A medium of propagation is not specified and is not needed for the theory to be practically useful.

When the Zetas were asked about the nature of light, they responded with a rather lengthy monologue. The transcript is reproduced in the next section. They spoke only tangentially about the mechanism underlying the propagation of light. In retrospect, though, they did cover a range of explanations of light, from the function of physical eyes to potentials of consciousness in non-physical realms. This article is an attempt to understand the physics of light from information in other conversations with the Zetas. The conclusion concerning the propagation of light was framed as a hypothesis since it was only ambiguously affirmed by a Zeta.

11.1 A Zeta's lesson on light

The Zetas were asked specifically to describe the nature of light. The intention was to gain a better physical understanding of electromagnetic radiation. They gave valuable information but did not focus on the underlying physics of light. The following is the Zeta's response.

What is light? Of course, a light is potential, a light is a, depending on who you are, what race, will then define what potential it will provide. For the humans, they are able to see a certain energy within a framework and the perception is light.

Now of course, some of your animals see different forms of potentials, different types of light. These potentials are also used in many different forms. So you see that a light can be a mechanism to provide illumination in darkness, that light can also be a communication.

Light is a frequency, some would say, which is a truth that a light has potential to be consciousness. Now of course, how a being sees this light is up to the way that they exist. If they exist within the physical, then they will use their physical eyes to view the light. Light is also used as a mechanism for life stimulation, to excite the potential of a cellular structure. Without light, many would perish. The physical body is able to convert light to the necessary components required to survive. Light also provides a balancing mechanism for consciousness. Your physical body is designed to require light.

Extraterrestrial Cosmology and Technology

On some level the etheric body of a human, or of any entity, is designed to accept light as a mechanism to provide stimulation, or to power it. You have developed technologies to convert light to energy, your solar power process. That is a biological function that has been moved to a physical technological process.

All beings of consciousness will see a form of light. If light exists where no matter exists, then consciousness will accurately understand itself to be in a potential. It is up to the consciousness as to whether they choose to perceive themselves as being in the darkness, or semi-darkness, or a bright level of consciousness.

So, it could be said that consciousness will determine its own existence, how it views itself and its surroundings by what provides it with the most comforting environment. Some consciousness may choose to live in what is perceived to be a darkness, whereas others will choose to live in a lighted consciousness. Consciousness creates its own illumination. I believe I have answered the question satisfactorily.

11.1.1 Comments on the lesson

Light is a sensation and the experience of a sensation is the instantiation of a particular potential in consciousness. So light is ultimately an experienced potential. How a particular light is experienced by an organism depends on the consciousness potential that is evoked. The sensory apparatus varies among different organisms, and so the potential in response to a particular light stimulus is also expected to vary. For example, the Zeta beings are sensitive to infrared light only, so “*the presentation of imagery is seen as different types of heat.*”

How the energy of light is received by a being depends on how the being exists. The energy enters the eyes of the physical body. It is transferred via the etheric body to the higher-self consciousness where it is transformed and experienced as a particular consciousness potential or sensation.

Light is experienced in other realms such as the astral and spirit realms, so the sensory apparatus of the etheric body is not essential to have the experience. In these other realms, a being may choose how the

consciousness potential is experienced. According to the Zeta, a being's intention can control the brightness of the light experienced as a sensation. This suggests that the perception can be modified by a filter created by the experiencer to produce the desired effect.

However, a human in the etheric realm cannot control the light with intention. This may be for the same reason that humans are unable to create thought forms. For technical reasons, humans typically cannot "intend" to create a filter. The human vibrational state does not include the *space of expansion* needed in order to create (see *The creation and perceptual processes*). Without the filter, the brightness of light is passively experienced as an outcome of the perceptual process.

11.2 A theory of light in consciousness

Various theories have been developed by humans to address the nature of light. The most widely used is Maxwell's theory of electromagnetism (e.g., Kip, 1969) which treats light as a field that propagates without a known medium. A theory is proposed that the grid is formed when quanta are created, and that the grid supports the propagation of light energy.

11.2.1 Light in the absence of quanta

Some conditions when light appears may help to understand its nature. A physical type of being creates a thought that already exists as a potential in total consciousness. The thought is represented by quanta which can be transformed to sensations such as brightness by the perceptual process.

A non-physical type of vibration is a potential of consciousness that cannot be decoded by physical beings, and so is perceived only as light. A Zeta commented, "*There are many places where the construct of what seems to be three-dimensional does not exist, the light area.*" Also, "*If light exists where no matter exists, then consciousness will accurately understand itself to be in a potential.*"

A non-physical race of beings known to the medium as the Anorians "*no longer see that they require the interactions between matter and the*

Extraterrestrial Cosmology and Technology

non-matter states,” so they are “the light area.” Further, the Anorians “no longer hold the desire to exist in a singular entity structure, and so they are seen as light.” The singular entity structure refers to a construct in consciousness like the spirit realm. The race does not create the quanta associated with matter, and no longer exists in a realm structure of consciousness. Either of these conditions can be the reason why the Anorian race appears to the perceptual process of physical beings as light.

A Zeta also said, *“Now remember that without matter, consciousness has no reflection, and so all consciousness exists from one source entity, but exists in matter as multiple races.”* That is, the experiences of physical beings are consciousness observing itself via the created quanta, but the experiences of non-physical beings are the unfiltered potentials of total consciousness, the *“one source entity”*. The perceptual process of physical beings interpret only quanta. The absence of quanta in the domain of non-physical beings is experienced via the perceptual process as light.

All beings form thoughts that are configurations of consciousness, and both physical and non-physical entities are places for thoughts to exist. A physical being uses thoughts to create quanta so that other physical beings can experience the same thoughts in a consensus reality. A non-physical being does not create quanta. Its thoughts likely persist as instantiations of the potentials of total consciousness, and perhaps are shared in that form. A non-physical Anorian suggested via the medium that it had the ability to control the extent that thoughts are shared. It said regarding its offspring, *“What joy is there in having a child who knows all you know?”*

The Zeta elaborated on the Anorian form of consciousness, *“Interesting entities, yes, a field or plane of consciousness, isolated and of intelligence. ... Imagine a thin field, a band, and the band contains the consciousness of the race, does not permeate all things.”* Instead of a singular entity structure, the “container” for the Anorians appears to be a band of vibrations in consciousness. They are isolated in the band, so they do not interfere with races in other vibrations of consciousness.

When an Anorian came near to him, the medium felt a powerful sensation of love, indicating the race has a very high vibration. So they are a group mind existing in a band of high vibrations without quanta where they experience total consciousness directly. They are sensed by our perceptual process as light and as a loving energy. The Zeta indicated there are other places without three-dimensional creations that are also experienced as light. As a general rule then, when our perceptual process encounters a dimension of vibration without quanta, it is transformed to an experience of light.

11.2.2 No light from the void

The Zeta said that nothing in consciousness outside our universe can be seen as light. *“Now, to imagine the universe is shaped as if it were an umbrella shape. Outside of the universe is a void in which there is no potential for light. This is consciousness.”* There is consciousness in the void that is beyond what we can experience as our universe, and it cannot be experienced as light. The Zeta added, *“If I was to use pictorial imagery, it is to be in a ever expanding state of existence, viewing the universe as being but a glimmer of light within a vast void of darkness.”* Out of all possible states of existence, only our universe is accessible to our perceptual process. Only the consciousness of the visible universe can be seen as *“a glimmer of light within a vast void of darkness.”*

The Zeta’s description of the universe appears to correspond to the prevailing human theory of the Big Bang (see [here](#) or [here](#)). The theory holds that the universe came into being as an instantaneous process. It expanded rapidly, then more slowly, and continues to expand today. The resulting image of the universe over time has the umbrella shape mentioned by the Zeta. Inside the umbrella are the various stages of evolution of the universe, including the subatomic particles, atoms, planets, stars, and galaxies. Many such objects are seen as light. From the perspective of the Big Bang theory, there is no possibility of seeing light from outside the expanding universe. This follows from the dynamics of the Big Bang model and the limitation on the speed of

light. The model cannot confirm or rule out the existence of the void of consciousness outside the umbrella shape described by the Zeta.

11.2.3 Propagation of EM radiation

An electromagnetic (EM) wave can be transmitted with an antenna. A simple form is the dipole antenna used for radio communication. The wave is generated by an applied voltage that varies in polarity over time along the antenna in a sinusoidal pattern. The applied voltage generates an EM field that propagates through free space. The EM wave can be intercepted at a distance by a resonating antenna where a corresponding time-varying voltage is generated.

The electrons in the transmitting antenna are objects of matter in consciousness and so they are quanta in the grid. A Zeta said, *“If you were to break down all of matter, it would be seen to be consciousness.”* Changes to the quanta would correlate with a varying voltage in the antenna. These changes would cause the alterations interpreted as an electromagnetic field, or light.

A being of the Anorian race took the medium, Paul Hamden, toward its collective consciousness. The medium described the experience as follows, “As I moved closer in trance to the Anorian race, I saw an extended flat field of light. I heard a telepathic voice say ‘Would you like to come closer?’ In that second, I was drawn closer without them waiting for an answer. Instantly, I started to forget who I was and saw cracks appear like on a sheet of glass. I was losing my existence. I psychologically stepped back as fast as I could to regain my construct. In one sense, it was terrifying, and in another sense, very enlightening.” He confirmed that physical beings experience the Anorian collective as light.

Why would someone like the medium perceive light when faced with a non-physical domain like that of the Anorians? Perhaps it is because quanta required by the perceptual process do not exist there, and so information cannot be transformed to sensations. The default perception by the perceptual process appears to be “an extended flat field of light.” The light would be generated by a being’s perceptual process and would

indicate that perception of the intended location is impossible. However, in a physical type of vibration dimension, the quantized grid and the non-quantized vibrations of consciousness may exist. Either or both could be involved with light generation and propagation.

The possible role of the grid in propagating light was examined by questioning a Zeta. The interviewer asked, "How does light propagate from a light source to the eyes? Is the light energy carried by vibrations of the grid?" The Zeta replied, "*All things are in constant movement.*" They did not deny that light propagated via the grid, but neither did they clearly agree. The ambiguous response suggests they were not satisfied with the premise of the question - that the grid alone propagates light.

The following hypothesis proposes that both the quantized consciousness (i.e., the grid) and non-quantized consciousness are involved in light generation and propagation. The particles of a creation stimulate the formation of the quantized grid. The hypothesis proposes how both the quantized and non-quantized vibrations of consciousness are involved in creating and propagating electromagnetic radiation in physical realms, and that the medium for EM propagation is the grid.

Hypothesis: Before the existence of matter, there was no grid. The Zeta said, "*... for the grid to be in its true state, there is no form for the grid.*" A quantized grid is proposed to exist when it is created by particles during a creation. Particles like neutrons, protons and electrons are created as quanta in the energy of consciousness. The quanta are embedded in the initially non-quantized field of consciousness. An electron, for example, has a quantized spin state which resonates with a vibration of the consciousness field. The effect is to amplify that particular vibration in the field, which then becomes part of the quantized grid structure.

Radio wave are propagated by the amplified vibration of the grid. The grid is a quantized energy of consciousness caused by the resonating energies of particles. The energy in the grid is received some distance away by quanta of electrons which also resonate with the originating electron.

The vibrations of the grid in the range of the visible spectrum may also be perceived by the eye. The vibrations are transformed by the perceptual process to sensations of colours.

The hypothesis proposes that an oscillating quantized source like an electron resonates with a particular vibrating non-quantized energy of consciousness. The resonance raises the energy of that element of the consciousness field and it forms a part of the grid. The energy from the electron propagates through the grid until it is absorbed by resonating with other quanta in its path. So an oscillating electrical potential from one quantized object is transferred to another via the quantized grid.

This hypothesis also suggests that empty space must be filled with the non-quantized energy of consciousness. When the space was created, it was given desired formal field properties (Treurniet and Hamden, 2022, *Informal and formal fields*). The formal field became the context for informal fields supporting the creation of objects in that space. The consciousness of a given space would have been given special properties such as the level of vibration and the bandwidth of its part of the etheric realm, the charge and angular momentum of electrons, the law of inertia, and other formal parameters. These properties support the subsequent creation of objects and their grids by informal fields.

11.3 Discussion

Maxwell's theory is a field theory in that light energy appears to propagate without being transmitted through a medium of matter. According to the theory, an electric field is emitted from an electric charge, and a magnetic field is generated by a charge in motion. The hypothesis in the preceding section proposed that an EM wave is initiated in the grid by the resonance of a particle with the non-quantized field of consciousness. Which of these energies resonate with the particle is determined by the particle's vibrational state.

According to the Zeta cosmology, the grid is a potential until it comes into existence. The hypothesis concerning electromagnetic wave propagation suggests how the grid comes into existence. For example, quantized energy is released by an electron with spin. An element of the

Extraterrestrial Cosmology and Technology

non-quantized vibration of consciousness increases in intensity when it resonates with the quantized representation of the electron. Such resonations form the quantized grid.

The hypothesis proposes that the oscillating potential of a particle generates an EM wave when the potential resonates with particular vibrations of consciousness. According to a Zeta, *“There are multidimensional fabrics of energies presented as frequency. Those frequencies make up your physical environment, your perception of your environment..”*

The ‘*multidimensional fabrics of energies*’ mentioned by the Zeta refer to the non-quantized energies of consciousness. When a Zeta manipulated these energies, a portal was created from one *Physical type of vibration* to another. The manipulation caused part of the room to appear to bend and the medium saw it as a vortex. According to the hypothesis, the optical effect occurred when vibrations of consciousness, or the medium for light propagation, was distorted.

12. A Schumann spectrogram anomaly

Summary: During early 2020, an anomaly occurred a number of times in the Schumann spectrogram. The phenomenon could not have been a naturally occurring event. The spectral energy was not continuous but had peak intensities at every Hz over the entire displayed range of 0-40 Hz. The Zeta indicated there is a relation between the main Schumann resonance of 7.8 Hz and the vibration of the human field of consciousness. Barring a more mundane explanation involving human agents, the Schumann anomaly may have been caused by an unusual vibration of consciousness.

The Earth is surrounded by an electrically conducting layer in the atmosphere known as the ionosphere. The spherical cavity between the ionosphere and the Earth's surface has an electromagnetic resonance known as the Schumann resonance. The frequency at 7.8 Hz is typically the most intense resonance, and several higher resonances at 14, 20, 26, 33, 39 and 45 Hertz, may also be seen. The frequencies are related to the circumference of the planet, and there is some variability. Rakov and Uman (2009, p. 434) explained that the variations occur primarily because of the changing properties of the ionosphere. The amplitudes of the resonances at any time are affected by the integrated world lightning activity, and there is a diurnal change in amplitude due to other factors that vary throughout the year.

Extraterrestrial Cosmology and Technology

The Zetas revealed that the vibration of the Earth consciousness grid is closely associated with the main Schumann resonant frequency of 7.8 Hz. The Zeta said, *“The vibration [of the grid] has a particular frequency. The humans have said it is known as the Schumann frequency. ... This means that to hold the physical construct that is required for humans to exist, that they must exist within the frequency of the range of the Schumann frequencies.”*

Further, they said, *“To go from the spirit realm to the physical reality means that there must be some commonality of frequency between physical existence and the spiritual side.”* There must be a connection between our physical experiences and experiences in other accessible realms. The multidimensional model of vibration in Treurniet (2019, Figure 2.1) suggests that the different vibrational states would likely be on the *Physical type of vibration* dimension.

The Schumann spectrograms are measured continuously by the Space Observing System, Tomsk, Russia, and the spectra are displayed graphically on an internet [website](#). The Space Observing System is one of very few places where such data is publicly available.

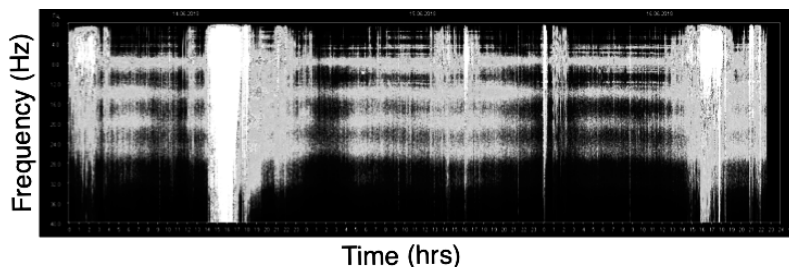


Figure 12.1. A normal three-day record of the Schumann spectrogram (courtesy of the Space Observing System, Tomsk, Russia.)

Extraterrestrial Cosmology and Technology

A typical spectrogram taken from the Tomsk website is shown in Figure 12.1. The y-axis represents frequency ranging from 0 Hz at the top of the axis to 40 Hz at the bottom. The x-axis marks time intervals in hours, and the figure shows a record of three consecutive days. The heaviest broad horizontal line near the top of the graph shows the 7.8 Hz resonance. The lowest horizontal line indicates that the highest resonant frequency in this sample is about 26 Hz.

An anomaly appeared a number of times in the Schumann spectrogram displays in early 2020. Figure 12.2 shows ten instances that appeared from January 10, 2020, to April 6, 2020. The anomaly is an unusual band of energy spanning the displayed frequency range. The spectral energy is not continuous but has peak intensities at every Hz. The duration of the anomaly was estimated to range from about 15 minutes to 53 minutes.

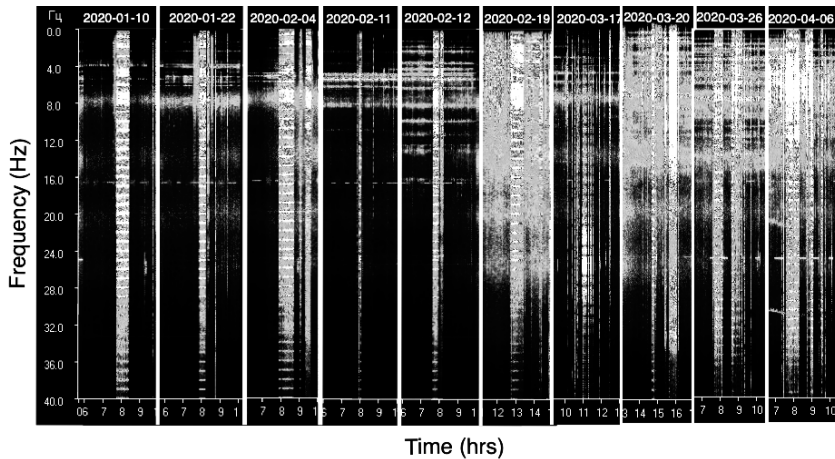


Figure 12.2. Ten samples of the anomalous Schumann spectrogram. (courtesy of the Space Observing System, Tomsk, Russia.)

Integrated multiple lightning strikes could create a band of noise energy spanning all frequencies as represented by the white vertical stripe in Figure 12.1. Note that the band of energy does not have the peak intensities at 1 Hz intervals. It normally never does, and so it seems likely that the precise anomalous modulations in Figure 12.2 were created intentionally by an intelligent agent.

The Schumann resonances are electromagnetic waves, and the Zeta information suggested the possibility that the medium for electromagnetic waves is the energy of consciousness (see *Propagation of light*). From this perspective, the anomalies seen in Figure 12.2 may be novel vibrations of consciousness reflected in the physical Schumann spectrogram.

12.1 Discussion

Several years ago, around 2012, the Zetas mentioned a shift in vibrational level of the Earth which was expected to occur a mere 10 years later around 2022 (see *A predicted global shift in vibration*). The anomalies shown in Figure 12.2 are indications that something might be going on related to the vibrations of consciousness.

The Zetas said that higher-vibration beings do not schedule events using a rigid time scale such as minutes, months, or years like humans do. For the Zeta race, there is only a progression of event sequences. Any event is a complex wave pattern in the energy of consciousness. One event is more likely to follow another when the end of the first resonates with the beginning of the next. The Zetas expected something to happen in the 2022 time frame, but they suggested the time of the shift might not be accurate. It is possible that the Schumann anomalies in 2020 were caused by preparations for a vibrational shift process occurring later as estimated by the Zetas.

13. Epilogue

The Zeta cosmology shows the way to revising our physical science theories in order to understand phenomena that cannot be explained with the current materialistic framework. However, the speed with which that will happen depends on the collective consciousness of the human race. A Zeta agreed that there is a system in place to limit the rate at which humanity as a whole will recognize that matter is an expression of consciousness.

The chapter, “*Disclosure on their terms*” in Hamden and Treurniet (2022), explains the nature of a control system managed jointly by extraterrestrial races, spirit realm entities, and human agencies. The concept of the control system was first proposed by Jacques Vallée (1975) as the means by which a non-human intelligence might gradually change the human myths underlying their reality.

The Zeta agreed that the control system is designed to minimize the fear that would arise in the population if the change happened too quickly. The system tries to maintain an optimal level of uncertainty regarding explanations of experienced absurdities. These would include the impossible flight characteristics of unidentified flying objects and the appearance of apports. Such unusual experiences followed by debunker explanations would encourage individual observers either to seek a new

Extraterrestrial Cosmology and Technology

understanding about reality or fall back on a conventional explanation. They may choose the latter to avoid forced acceptance of a new world view accompanied by fear.

Perhaps it would be the scientifically minded group that would be most resistant if humanity were forced by incontrovertible evidence to accept the idealist's view that all reality is mental. On the other hand, some may find it liberating to finally be able to reject materialism. If the level of uncertainty is optimal, the majority point of view about which philosophy is best should gradually shift in the direction that most successfully explains the experienced phenomena.

The etheric realm is currently not recognized by scientific theories. If it were, the materialism assumption would likely have to be replaced with something else. With the control system in place, it may take many more exposures to evidence before that happens.

A Zeta observed that the human race is developing into a higher level of consciousness. It is evolving slowly as expected, but eventually the collective consciousness *"is to be born of love"*. This outcome will enable contact with waiting extraterrestrial beings who cannot function easily in our current vibrational state. A Zeta said, *"Then, of course, the other races which view you on your daily basis, will actively interact with the collective mind of the human race."* But they also said, *"Before loving, is understanding. There are levels to be achieved in consciousness."* Understanding the role of the etheric realm in creating the physical illusion is a good first step towards knowing that all is consciousness.

13.1 The power of illusion

According to a Zeta, *"It is consciousness that has created the illusion of matter."* Edward Close (2000) concurred when he said, *"Structure and form, originating in primary consciousness, is projected as a spectrum of potentialities. The process is completed when one specific structure or form is selected by observation and confirmed again in the nonlocal space of consciousness."*

Extraterrestrial Cosmology and Technology

Matter is represented in the vibrational states of the etheric realm as a spectrum of quantized potentials. Particular potentials are selected by the perceptual process of a conscious being. Matter is experienced as sensations when the selected quanta are transformed to consciousness potentials. Everything takes place in consciousness. The independent existence of matter is erroneously inferred by the consciousness of the observer. Matter is an illusion created by consciousness.

The physical illusion is very powerful, so powerful that the demonstrably inadequate philosophy of materialism (Kastrup, 2019) is readily accepted by most people. A Zeta observed, *“The illusion is the physical life, but others seek to define the physical life as being the real reality, which it is not.”* They added, *“Humans do not like to know the truth, they like their own physical constructs because that provides them with a level of safety. You are in comfort within your illusion.”* People feel safer in the illusion of materialism, so they shy away from accepting that consciousness forms reality. But even when the illusion is understood, it is not easy to accept that matter objects are constructs created in consciousness.

When the Zetas say that everything is illusion, they include our beliefs which are sometimes easily restructured by new information. For example, when they were questioned about chakras and kundalini energy, they replied that these are belief structures devised by humans. Such structures can be useful but, like matter, they are illusions created by consciousness.

Consciousness has a fundamental role in creating the structure of our inner life as well as matter. There are people who recognize this and have learned to manipulate the consciousness of others. In our society, the advertising industry is adept at creating needs where there were none. Public relations firms have methodologies for changing people's perceptions about other people and institutions. People in positions of authority take advantage of their power to convince others that undesirable actions like wars are necessary.

We often accept such manipulation in order to keep the wheels of society turning, believing that the manipulations are harmless or can be

Extraterrestrial Cosmology and Technology

resisted. But the manipulations can be subtle and serve agendas that are to the advantage of relatively few people. This is especially true in the area of geopolitics where power over others is the objective.

An important tool for advancing agendas are the media. The various media can implant memes in the minds of their audiences. For example, communication of propaganda to the masses is an important function of the media. When it is done carefully, many people are unaware that some of their thoughts have been implanted. Due to this lack of awareness, they more easily accept the actions of people in positions of power.

The media also present programming materials that viewers like, so that they will also watch accompanying advertisements that provide revenue. For example, the programming often includes law and order dramas where serious crimes such as murder predominate. The programmers likely recognize that many viewers feel insecure and like to see that criminals are punished.

However, viewing scenarios of what we fear creates more thought structures that perpetuate the fear, and may even create a scenario where the viewer is a fearful participant. A Zeta said, "*What exists in illusion is manifested into the physical.*" The unnecessary fear can be avoided simply by staying away from programming that stimulates fearful thoughts. Such mental hygiene is important for sustaining happy states of mind.

Breaking free from the ontology of materialism should help humans reorder their priorities so that higher states of consciousness become most desirable. A more loving population will create the self-aware collective consciousness that seems to be needed for the next phase in human evolution.

Bibliography

- Alexander, E. *Proof of Heaven: A Neurosurgeon's Journey into the Afterlife*, Simon & Schuster, New York, 2012.
- Aspect, A. *Bell's inequality test: more ideal than ever*, Nature, 398, March 18, 1999.
- Aspect, A., Dalibard, J., and G. Roger. *Experimental test of Bell's inequalities using time-varying analyzers*, Physical Review Letters, **49**:25, 1804, 1982.
- Bekenstein, J. D. *Information in the holographic universe*, Scientific American **289**(2):58-65, 2003.
- Close, Edward R. *Transcendental Physics*, toExcel Press, 2000.
- DelayChoice, *Experiment confirms quantum theory weirdness*, Phys.org, May, [Online] phys.org/news/2015-05-quantum-theory-weirdness.html, 2015.
- Epelbaum, E., Krebs, H., Lee, D., Meißner, U. *Ab Initio Calculation of the Hoyle State*. Physical Review Letters, **106**:192501, 2011.
- EPR_BELL_ASPECT, *The Original References*, [Online] www.drchinese.com/David/EPR_Bell_Aspect.htm.
- Hamden, P. *Alien Interaction Trilogy*, [Online] https://www.etsy.com/au/listing/949116779/alien-interaction-trilogy-by-paul-hamden?fbclid=IwAR3Mt2tNnFM_XvBQEjdrGy1BTSPHpp-r20Hm2lX0nxDyCaydvTWOuyUAZ7c, 2012.
- Hamden, P. and Treurniet, W. C. and, P. *The Zeta interviews*, Lulu Press Inc., Morrisville, North Carolina, [Online] <http://www.treurniet.ca/zetacom/zetaprimer.htm>, 2020.
- Hameroff S. *Quantum computation in brain microtubules – The Penrose-Hameroff “Orch OR” model of consciousness*. Phil Trans Royal Society London (A) 356:1869-96, 1998.

Extraterrestrial Cosmology and Technology

- Hameroff, S. *Consciousness, the Brain, and Spacetime Geometry*, Ann New York Acad Sci. **929**:74-104, 2001.
- Hameroff, S. and Penrose, R. *Consciousness in the universe: A review of the 'Orch OR' theory*, *Physics of Life Reviews*, **11**(1):39-78, 2014.
- Hameroff S. and Chopra, D. *Can science explain the soul?*, [Online] www.sfgate.com/opinion/chopra/article/A-conversation-consciousness-and-the-connection-2464153.php, 2010.
- Haramain, N. *Quantum gravity and the holographic mass*, *Physical Review & Research International*, **3**(4): 270-292, [Online] https://s3.amazonaws.com/kajabi-storefronts-production/sites/98768/themes/1764141/downloads/OVi9rLzVRKOZKAe787Qg_QGHM.pdf, 2013a.
- Haramain, N. *Addendum to "Quantum Gravity and the Holographic Mass" in View of the 2013 Muonic Proton Charge Radius Measurement*, Hawaii Institute for Unified Physics, © Nassim Haramain, 2013b.
- Harvey, B. G. *Introduction to Nuclear Physics and Chemistry*, Prentice-Hall, London, 1962.
- Horgan, J. *Quantum philosophy*, *Scientific American*, [Online] physics.gmu.edu/~rubinp/courses/123/scientificamerican0792-94.pdf, July, 1992.
- Hotson, D. L. *Dirac's Equation and the Sea of Negative Energy*, Part 1, *Infinite Energy*, 43, 1- 20, 2002a.
- Hotson, D. L. *Dirac's Equation and the Sea of Negative Energy*, Part 2, *Infinite Energy*, 44, 1- 24, 2002b.
- Hotson, D. L. *Dirac's Equation and the Sea of Negative Energy*, Part 3: Structure and Unification, *Infinite Energy*, 86, 20-32, 2009.

Extraterrestrial Cosmology and Technology

- Jacques, V., Wu, E., Drosshans, F., Treussart, F., Grangier, P., ASpect, A., and Roch, J. Experimental Realization of Wheeler's Delayed-Choice Gedanken Experiment, Science, 315(5814), 966-968, 2007.
- Jahn, R. G. The persistent paradox of psychic phenomena: An engineering perspective, *Proc. Of the IEEE*, **70**, pp. 136-170, 1982.
- Kastrup, B. *The Idea of the World*, John Hunt Publishing Ltd, Alresford, Hampshire, UK, 2019.
- Kip, A. F. *Fundamentals of Electricity and Magnetism*, McGraw-Hill, NY, 1969.
- Lerner, K. L. *Physics: Maxwell's Equations, Light And The Electromagnetic Spectrum*, [Online], <https://www.encyclopedia.com/science/science-magazines/physics-maxwells-equations-light-and-electromagnetic-spectrum> Retrieved August 14, 2019.
- Perkowitz, S. *Bose-Einstein condensate (BEC)*, Encyclopaedia Britannica, September, [Online] <https://www.britannica.com/science/Bose-Einstein-condensate>, 2008.
- Prahl, S. Optical absorption of hemoglobin, omlc.ogi.edu/spectra/hemoglobin/, 1999.
- QuantumEraser, *A Double-Slit Quantum Eraser Experiment*, [Online] grad.physics.sunysb.edu/~amarch/, 2002.
- Sarg, S. *Basic Structures of Matter – Supergravitation Unified Theory*, Trafford Publishing, 2006.
- ScienceDaily URL, Carbon, carbon everywhere, but not from the Big Bang, ScienceDaily, 11 May 2011.
- Sheldrake, R. Mind, Memory, and Archetype: Morphic Resonance and the Collective Unconscious - Part III, Psychological Perspectives, 19(1), 64-78, 1988.
- Sheldrake, R. *Morphic Resonance: The Nature of Formative Causation*, Park Street Press, Rochester, Vermont, 2009.

Extraterrestrial Cosmology and Technology

- Sheldrake, R. Setting science free from materialism, *Explore*, Vol. **9**(4): 211-218, 2013.
- Susskind L. *The world as a hologram*. J. Math. Phys. arXiv:hep-th/9409089, 1-34, 1994.
- 't Hooft G. *Dimensional reduction in quantum gravity*. Utrecht Preprint THU-93/26, gr-qc/9310006, 1993. Also published in arXiv:gr-qc/9310026v2, 1-13, 2009.
- Treurniet, W. An observed property of UAP in photographs, *The WISE Journal*, **6**(4):117, 2017.
- Treurniet, W. C. *A cosmology founded on intrinsic attributes of consciousness*, J. Consciousness Exploration & Research, **10**(6):454-474, [Online] <https://jcer.com/index.php/jcj/article/view/822/834>, 2019.
- Treurniet, W. *Signs of a Multidimensional Reality*, Lulu Press Inc., Morrisville, North Carolina, [Online] <http://www.treurniet.ca/evidence/>, 2021.
- Treurniet, W. C. and Hamden, P. *A Primer of the Zeta Race*, Lulu Press Inc., Morrisville, North Carolina, [Online] <http://www.treurniet.ca/zetacom/zetaprimer.htm>, 2022.
- Vallée, J. *The Invisible College*, E.P. Dutton, NY, 1975., also published as *UFOs: The Psychic Solution*, Panther Books, 1975.
- Walborn, S. P., Terra Cunha, M. O., Padua, S. and Monken, C. H. *Double-slit quantum eraser*, Physical Review, **65**, 033818, 2002.
- Walborn, S. P., Terra Cunha, M. O., Padua, S. and Monken, C. H. *Quantum erasure*, American Scientist, **91**:336-343, 2003.
- Whitt, S. *The experiment with two holes*, [Online] <https://stephenwhitt.wordpress.com/2008/12/17/the-experiment-with-two-holes/>, 2008.

Extraterrestrial Cosmology and Technology

Whitt, S. *Quantum Erasers and Free Will*, [Online] <https://stephenwhitt.wordpress.com/2010/09/26/quantum-erasers-and-free-will/>, 2010.